



**EXCELSSIOR EDUCATION SOCIETY'S
K. C. College of Engineering & Management Studies & Research
Mith Bunder Road, Kopri, Thane (E)**



Cycle – 2 NAAC Accreditation 2024

Criteria 7: Institutional Values and Best Practices

7.1.3 Quality audits on environment and energy regularly undertaken by the Institution.
The institutional environment and energy initiatives are confirmed through the following.

1. Green audit / Environment audit
2. Energy audit:
3. Clean and green campus initiatives
4. Beyond the campus environmental promotion and sustainability activities

Submitted to



National Assessment and Accreditation Council

Report

On

GREEN, ENERGY & ENVIRONMENT AUDIT

of

**K.C. Collage of Engineering
and Management Studies & Research**
Thane

Prepared

By

Senergy Consultants Pvt Ltd
Mumbai

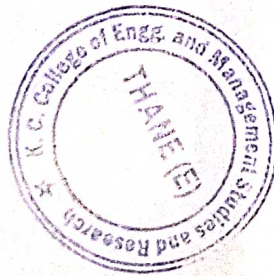
April – 2024

Helping You to Conserve Energy

Green, Energy & Environment Audit Report
K.C. Collage of Engineering and Management Studies & Research

Contents

Sr. No	Description	Page
I	Introduction	3
II	Executive Summary	4
III	Electrical Gadgets	6
IV	Environmental System	11
V	Water Management	14
VI	Waste Generation & Management	16
VII	Infrastructure & Safety	18
VIII	Green Culture	23
IX	Renewable Energy	26



Dr. Vilas N. Nitaware
Principal
K.C. College of Engineering &
Management Studies & Research.

Helping You to Conserve Energy

Green, Energy & Environment Audit Report
K.C. Collage of Engineering and Management Studies & Research

I Introduction

Green & Energy Audit was undertaken at K.C. Collage of Engineering and Management Studies & Research, Mithbunder Road, near Sadguru Gardens, Kopri, Thane (East) – 400 603, During the month of April 2024.

The organization is very keen to promote green culture wherever possible, as a commitment towards better environment and conservation of energy. A lot of efforts have already been put up to bring down the carbon footprint. To further optimize consumption and identify saving opportunities, M/s Senergy Consultants was assigned to carry out Green & Energy Audit of the premises.

This Audit Report presents the analysis of the data collected, observations made at the facility and is governed by the objectives, scope of work, methodology etc. discussed in the ensuing paragraphs.

Team:

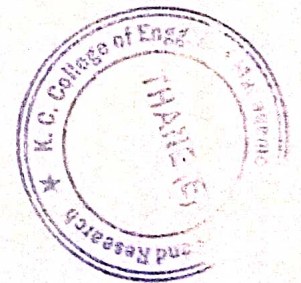
The team members of the audit study.


- Mr Ravindra Datar
- Mr Nitesh Kharche
- Mr Vivek Pawar
- Mr Vikas Kharatmol

Acknowledgment:

We wish to express our gratitude towards Dr. Saikiran Khanna (Managing Director - Excelssior Education Society), Dr. Puja Rai Pradhan (COO), Dr. Vilas Nitnaware (Principal), Dr. Avishek Ray (Vice Principal), Dr. Shelly Oberoi (Head of Department HAS) for having given us the opportunity for conducting the study and the support provided during the study.

We are thankful to Prof. Amarja Adgoankar (IQAC- Co-Ordinator), Dr. Pallavi Chopade (Creteria 7 Incharge), Prof. S. Bhuma Devi (Kc-Green Club Co-Ordinator), Prof. Sushma Kore (Kc-Green Club Sub Co-Ordinator), Prof. Punam Bagul (Kc-Green Club Member) for extending necessary help and co-operation from their side.




Dr. Vilas N. Nitnaware
Principal
K.C. Collage of Engineering &
Management Studies & Research.

Helping You to Conserve Energy

II Executive Summary

The premises were evaluated against the various criterions laid down by the National Assessment and Accreditation Council (NAAC). The major observations are.

Renewable Energy:

- The college has installed Rooftop Solar Photovoltaic System with Net Metering Facility.
- There are no applications for Solar hot water.
- The quantity of plate waste (organic waste with higher starch contents) is negligible, consequently, there is no Potential for biogas generation. The College has already installed the Compost pit.

Air Quality & Ventilation:

- The classrooms and other areas are well ventilated to ensure proper air quality.
- The fans are appropriately installed to ensure proper air circulation.
- Indoor as well as outdoor plants have also been provided to improve the environment.
- The air conditioned rooms are provided with proper ventilation and fresh air.

Lighting System:

- The usage of natural light is optimized through well designed structures and windows.
- Almost all the lamps are replaced with energy efficient LED lamps.
- It is suggested to automate the switching of lamps in the common areas and washrooms with sensor based control.

Green Campus Initiative:

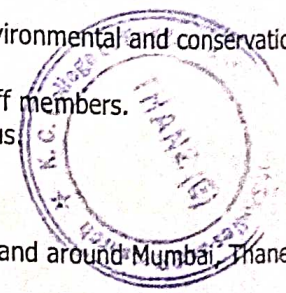
- The movement of vehicle inside the campus is restricted with vehicles of Staff and Special Dignitaries are allowed to enter the campus with designated parking area.
- Pedestrian friendly pathways have been constructed for easy movement inside the campus.
- The use of plastic has been reduced inside the campus.
- The campus is surrounded by a lot of greenery, trees, and proper landscaping.
- The college has internal committee for conservation of resources like energy, water.
- The student participation are also encouraged in such activities through student clubs and groups.

Environment & Energy Initiative:

- The college has formed internal committees and student Eco-club for promoting environmental and conservation activities.
- Various tree plantation & seed plantation drive was undertaken by students and staff members.
- Dry waste and E-waste collection drive was conducted by students inside the campus.

Water Quality & Conservation:

- The water is supplied by the Municipal Corporation, which is a common practice in and around Mumbai, Thane & Navi Mumbai.
- Water purifiers & coolers are provided on convenient locations.
- The distribution network and piping are satisfactory and adequate.



Helping You to Conserve Energy

Green, Energy & Environment Audit Report
K.C. Collage of Engineering and Management Studies & Research

Waste Management:

- The effluent water is discharged in the municipal drain, which is a common practice in and around Mumbai, Thane & Navi Mumbai.
- The organic waste is segregated and converted into manure in the composting pits.
- There is no hazardous or medical waste generated in the college.
- The electronic gadgets / waste is either donated if useful or handed over to appropriate waste collectors.
- The general solid waste is disposed through municipal corporation.

Infrastructure usage:

- Ramps and lifts are provided on the ground floor to address the needs of differently abled persons.
- The on-campus movement is distributed with multiple staircases.
- The fire extinguishers are provided at key areas.
- The draining system for washrooms is efficient and effective.
- There were no seepages observed in the building premises.

Air Conditioning System:

- The Air Conditioners are operated as required with manual control. The operation is minimal consequently automation may not be economical.
- The room temperature is maintained at 24 to 25 °C, which is well within the recommended values.
- The Air Conditioners are serviced regularly and properly maintained.
- Most of the Air Conditioners units are energy efficient with star rating of 3 & above.
- The air conditioned space is properly sealed to prevent air ingress / cold air loss.

Green IT culture:

- Energy efficient computers and laptops have been procured.
- Electronic communication is encouraged to minimize usage of papers.
- Most of the papers are reused for double sided printing to further minimize usage of paper.



Dr. Vilas N. Nitnaware
Principal

K.C. Collage of Engineering &
Management Studies & Research

Green, Energy & Environment Audit Report
K.C. Collage of Engineering and Management Studies & Research

III

Electrical Gadget

Gadget List

Light Fittings:

Sr No.	Location	LED Lamps
1st Floor		
1	Language Lab	5
2	EDC 107	9
3	MDC 100	8
4	DLDA 106	6
5	Cabin	1
6	Project Lab 104-A	3
7	Common Lab 110	6
8	Microprocessor Lab 111	8
9	X Lab 112	14
10	Computer LAB 104	5
11	Classroom 103	8
12	Classroom 101	9
13	RB Office	7
14	Store	4
15	Corridor	8
2nd Floor		
16	Physics Lab	6
17	Chemistry Lab	4
18	Chemistry Lab Corridor	2
19	Biology Lab	10
20	Classroom 203	8
21	Classroom 204	3
22	HOD	2
23	Classroom 210	8
24	Classroom 211	12
25	Classroom 212	7
26	Classroom 213	7
27	New Computer Lab	6
28	Old Computer Lab	3
29	HOD IT	2
30	Lab	10
31	Classroom 207	7
32	Classroom 208	15
33	Boys Common Room	4
34	209	4



Helping You to Conserve Energy

Email: scpl@senergy.co.in

Phone: 022 2555 3297

Dr. Vilas H. Hirasware

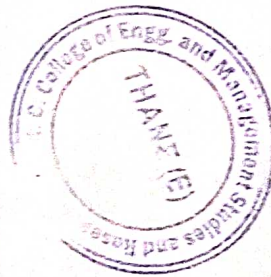
Page 6 of 26
K.C. College of Engineering
Management Studies & Research


Green, Energy & Environment Audit Report
K.C. Collage of Engineering and Management Studies & Research

Sr No.	Location	LED Lamps
3rd Floor		
35	Hall	10
36	Classroom 310	10
37	Classroom 311	11
38	Classroom 312	7
39	Classroom 313	6
40	Classroom 300	10
41	Classroom 307	9
42	Classroom 306	9
43	Corridor	12
44	Classroom 308	5
45	309 Lab	5
46	HOD Cabin	2
4th Floor		
47	Corridor	15
48	Washroom	1
49	Library	17
50	SSL Lab	10
5th Floor		
51	510	4
52	511	10
53	512	6
54	513	12
	Total	392

Ceiling Fans:

Sr No.	Location	Celling Fans
1st Floor		
1	Language Lab	6
2	EDC 107	8
3	MDC 100	9
4	DLDA 106	6
5	Cabin	1
6	Project Lab 104-A	2
7	Common Lab 110	8
8	Microprocessor Lab 111	8
9	X Lab 112	8
10	Computer LAB 104	4
11	Classroom 103	8
12	Classroom 101	8
13	RB Office	4
14	Store	2
15	Corridor	




Dr. Vilas N. Nitaware
 Principal

K.C. College of Engineering & Management Studies & Research

Helping You to Conserve Energy

Green, Energy & Environment Audit Report
K.C. Collage of Engineering and Management Studies & Research

Sr No.	Location	Celling Fans
2nd Floor		
16	Physics Lab	4
17	Chemistry Lab	2
18	Chemistry Lab Corridor	1
19	Biology Lab	4
20	Classroom 203	8
21	Classroom 204	4
22	HOD	1
23	Classroom 210	8
24	Classroom 211	8
25	Classroom 212	4
26	Classroom 213	4
27	New Computer Lab	4
28	Old Computer Lab	4
29	HOD IT	1
30	Lab	9
31	Classroom 207	8
32	Classroom 208	8
33	Boys Common Room	2
34	209	4
3rd Floor		
35	Hall	36
36	Classroom 310	7
37	Classroom 311	8
38	Classroom 312	4
39	Classroom 313	4
40	Classroom 300	10
41	Classroom 307	8
42	Classroom 306	8
43	Corridor	
44	Classroom 308	4
45	309 Lab	4
46	HOD Cabin	1
4th Floor		
47	Corridor	8
48	Washroom	1
49	Library	16
50	SSL Lab	8
5th Floor		
51	510	1
52	511	2
53	512	1
54	513	8
	Total	309



Helping You to Conserve Energy

Dr. Vilas N. Nitnawade
Principal

K.C. College of Engineering & Management Studies & Research
Page 8 of 26

Green, Energy & Environment Audit Report
K.C. Collage of Engineering and Management Studies & Research

Air Conditioning Units:

Sr No.	Lab Name	Floor	Quantity
1	Internet Lab (Lab 1)	Ground	3
2	Operating system Lab (Lab 2)	Ground	2
3	System Programming (Lab 3)	Ground	3
4	Seminar hall	Ground	4
5	Database Lab (Lab 4)	Ground	3
6	Training And Placement Office	Ground	1
7	Conference Room	Ground	1
8	Lobby	Ground	1
9	Chairperson cabin	Ground	1
10	MMS	Ground	1
11	IQAC	Ground	2
12	Principal Sir Cabin	Ground	1
13	Account	Ground	1
14	Temple	Ground	1
15	Admin	Ground	1
16	Lab x	First	3
17	Lab 109	First	2
18	K. B	First	3
19	Communication Lab	First	1
20	Microprocessor Lab	First	1
21	Lab 200(Fab Lab)	Second	2
22	208 LAB	Second	4
23	Lab 209	Second	2
24	Lab 309	Third	2
25	Simulation Lab	Fourth	2
26	IQAC	Ground	2
27	Principal Sir Cabin	Ground	1
28	Admin	Ground	1
29	Seminar hall	Fourth	2
30	MMS CLASSROOM	Fifth	6
31	Library	Fifth	1
	Total		61

Observations & Suggestions:

- Almost all the lamps are replaced with energy efficient LED lamps.
- The fans are of standard efficiency, which may be replaced with high efficiency fans with BLDC motor.
- The Air Conditioning Units are with star rating of 3 & above, which are intrinsically operate at high energy efficiency.



Dr. Vilas N. Nitnaware

Principal
K.C. Collage of Engineering &
Management Studies & Research*Helping You to Conserve Energy*

Green, Energy & Environment Audit Report
K.C. Collage of Engineering and Management Studies & Research

- The Air Conditioners are operated as required with manual control. The operation is minimal consequently automation may not be economical.
- The temperature is maintained at 24 to 25 °C for air conditioning spaces, which is within the recommended values.
- The rooms are well ventilated and provided with fans at appropriate location for proper air circulation.
- The gadgets are serviced properly and maintained in good condition.

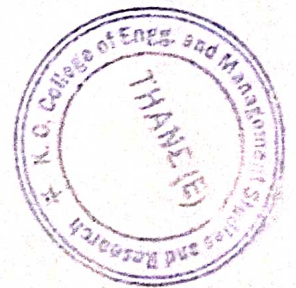
Electricity Bill:

Consumer Name: K.C. Collage of Engineering and Management Studies & Research	
Consumer No.: 000033051492	Utility Provider: Maharashtra State Electricity Distribution Co. Ltd.
Meter No.: 055-XC463891	Tariff Category: 89/LT-VII B I Contract Demand : 50 KW

Description	Unit	Aug-23	Sep-23	Oct-23	Nov-23	Dec-23	Jan-24	Average
Energy Consumption	KWH	11478	11071	13999	7939	7961	7999	10075
Bill	Rs	185388	173460	179310	126020	116910	119630	150120
Cost	Rs/KWH	16.15	15.67	12.81	15.87	14.69	14.96	14.9

Observations:

- The power consumption & cost is within the normal range.



Dr. Vilas N. Nitaware

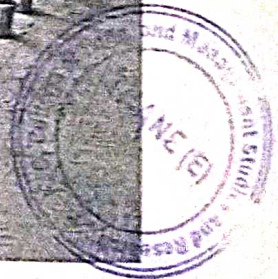
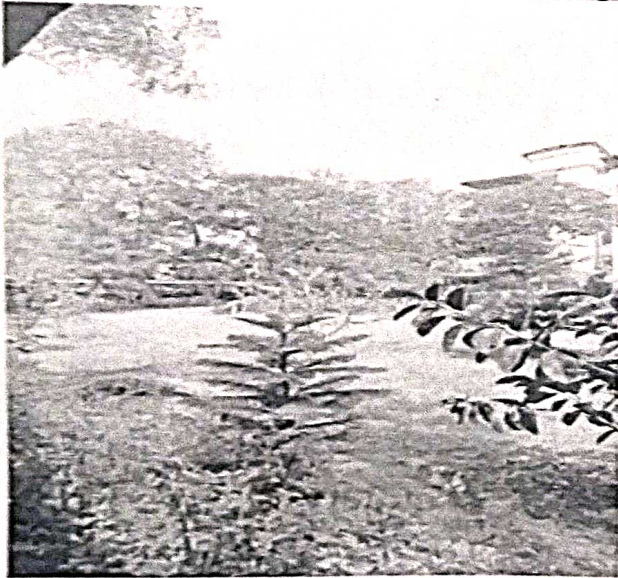
Principal

K.C. Collage of Engineering & Management Studies & Research

IV Environmental System

Ventilation & Air Quality:

- The air ventilation is adequate.
- Several indoor & outdoor plants have been installed to improve air quality.



Helping You to Conserve Energy

Email: scpl@senergy.co.in

Phone: 022 2555 3297

Dr. Vilas N. Nitnaware

Principal

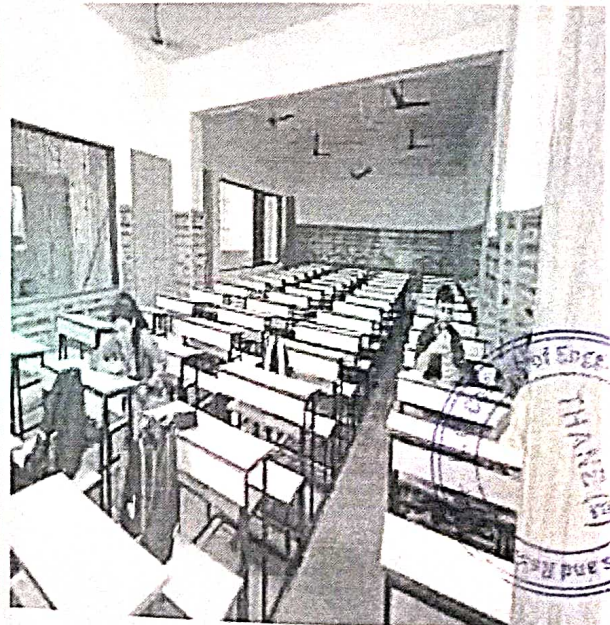
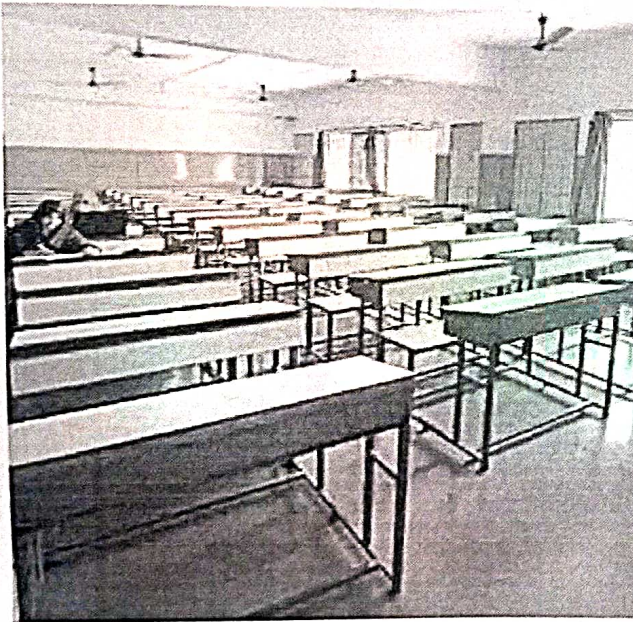
Page 11 of 26

K.C. Collage of Engineering and
Management Studies & Research

Green, Energy & Environment Audit Report
K.C. Collage of Engineering and Management Studles & Research




- Natural light is been used for maximum illumination during daytime.
- It has been a general practice to switch off the fans & lights in an occupied area.



Helping You to Conserve Energy

Email: scpl@senergy.co.in

Phone: 022 2555 3297


Dr. Vilas N. Nitnaware
Principal
K.C. Collage of Engineering & Management Studies & Research.

Green, Energy & Environment Audit Report
K.C. Collage of Engineering and Management Studies & Research

Indoor & Outdoor Plants :

Sr No	Name of Plants
1	Arabian jasmine - Jasminum sambac
2	Almond - Terminalia Catappa
3	Hibiscus - Hibiscus rose-sinesis
4	river tamarind - Leucaena leucocephala
5	Monoon longifolium - Polyalthia longifolia
6	Ti - Cordyline fruticosa
7	Rubber fig - Ficus elastica
8	Bamboo - bambusa
9	Papaya - Carica papaya
10	Sago palm - Cycas revoluta
11	Banana - musa
12	Camphor - Ficus benjamina
13	Nile tupil - markhamia
14	Lemon - Citrus limon Burm
15	Pomegranate - Punica granatum
16	Oak - Casuarina equisetifolia
17	Oyster - tradescantia
18	Snake plant - dracaena Tri Fascista
19	Coconut - Cocos nucifera
20	Areca palm - dypsis lutescens
21	Banyan - Ficus benghalensis
	Total Number of Plants = 241



Helping You to Conserve Energy

Email: scpl@senergy.co.in

Phone: 022 2555 3297

Dr. Vilas N. Nitnawara

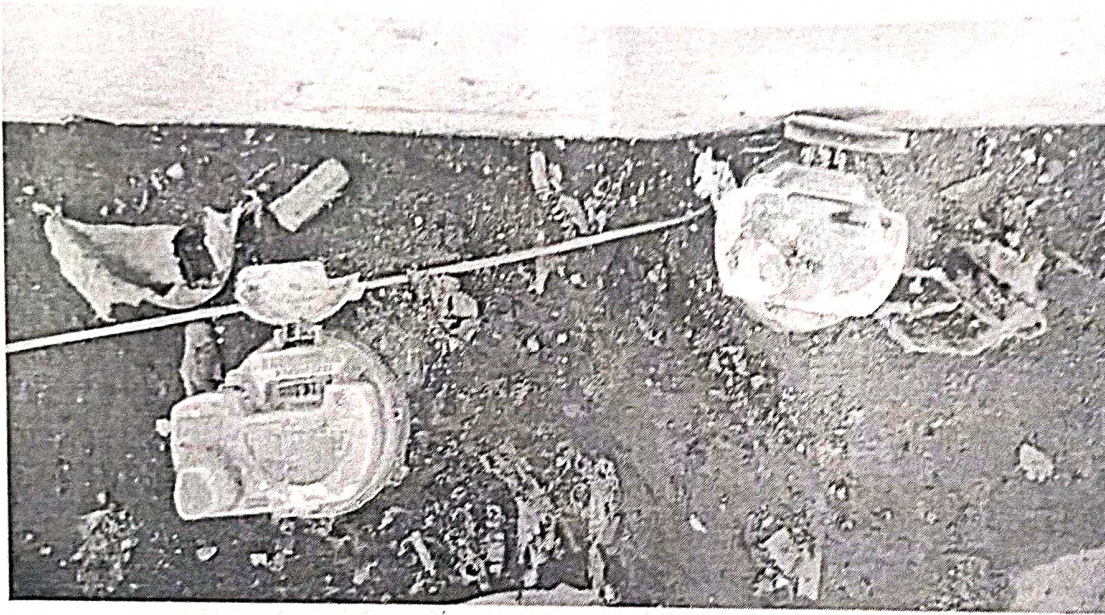
Page 13 of 26

Principal
K.C. Collage of Engineering &
Management Studies & Research

V Water Management

Water Source:

The water supplied by the municipal corporation is used for drinking & other requirements. The incoming water from the municipal corporation is metered.



The water consumption is generally within the norms.

Water Coolers & Purifiers:

The water purifiers and coolers are provided on convenient locations, the details are as under.

Sr no.	Location	Total
1	First Floor	1
2	Second Floor	1
3	Fifth Floor	1



Dr. Vilas N. Nitnaware
 Principal
 K.C. College of Engineering and
 Management Studies & Research



Water Distribution System:

The distribution network and piping are more or less satisfactory and adequate.

Rainwater Harvesting:

The rainwater from the terrace area of the college building is being drained into municipal storm water system through requisite ducts and pipes.

However, considering proximity to the seashore, rainwater harvesting may not be practical.



Helping You to Conserve Energy

Dr. Vilas N. Nitnaware
Principal
K.C. College of Engineering and Management Studies and Research
Thane (E)

VI Waste Generation & Management

Sewage & Wastewater:

The sewage is fed into the municipal drainage. This is a common practice and the municipal corporation which charges towards the sewage charges.

Solid Waste:

- The organic as well as inorganic waste is segregated in the college premises.
- The dustbins for Recyclable waste and Non-Recyclable Waste have been provided at appropriate locations.
- The organic waste is used to generate manure by composting.
- The electronic gadgets with residual life may be donated while the electronic waste is properly segregated and handed over to appropriate scrap collector.



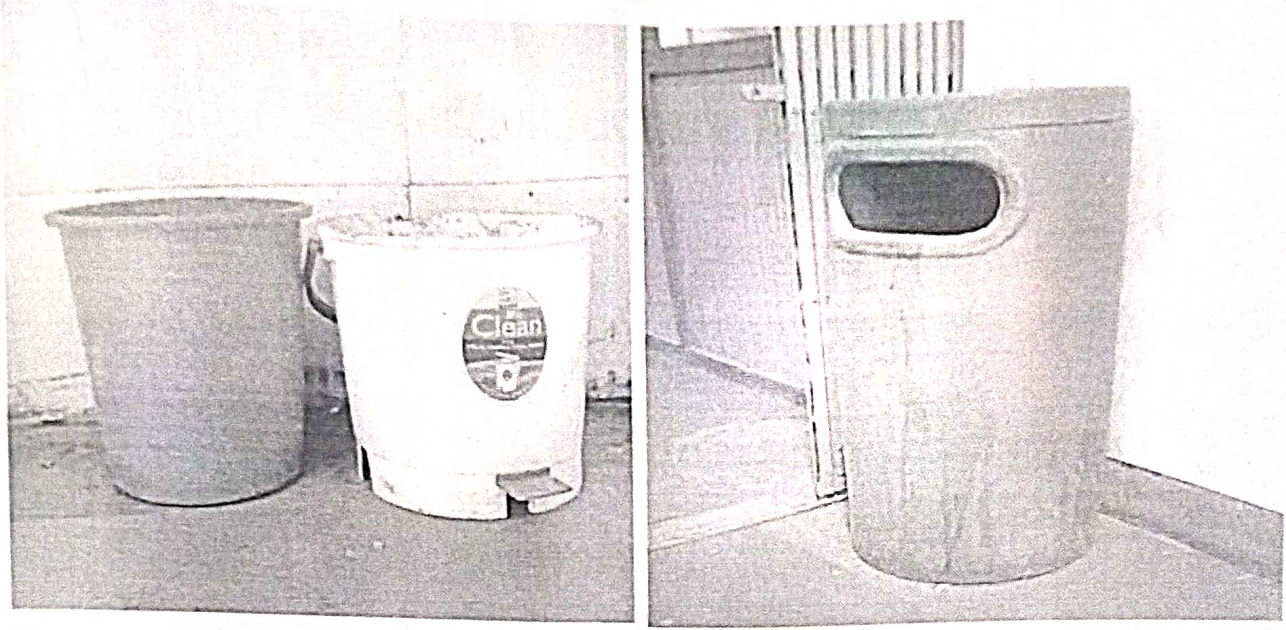
(Handwritten signature)

Helping You to Conserve Energy

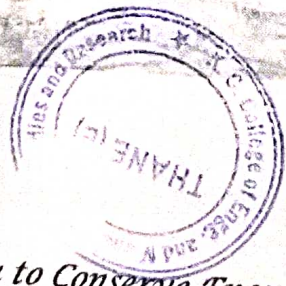
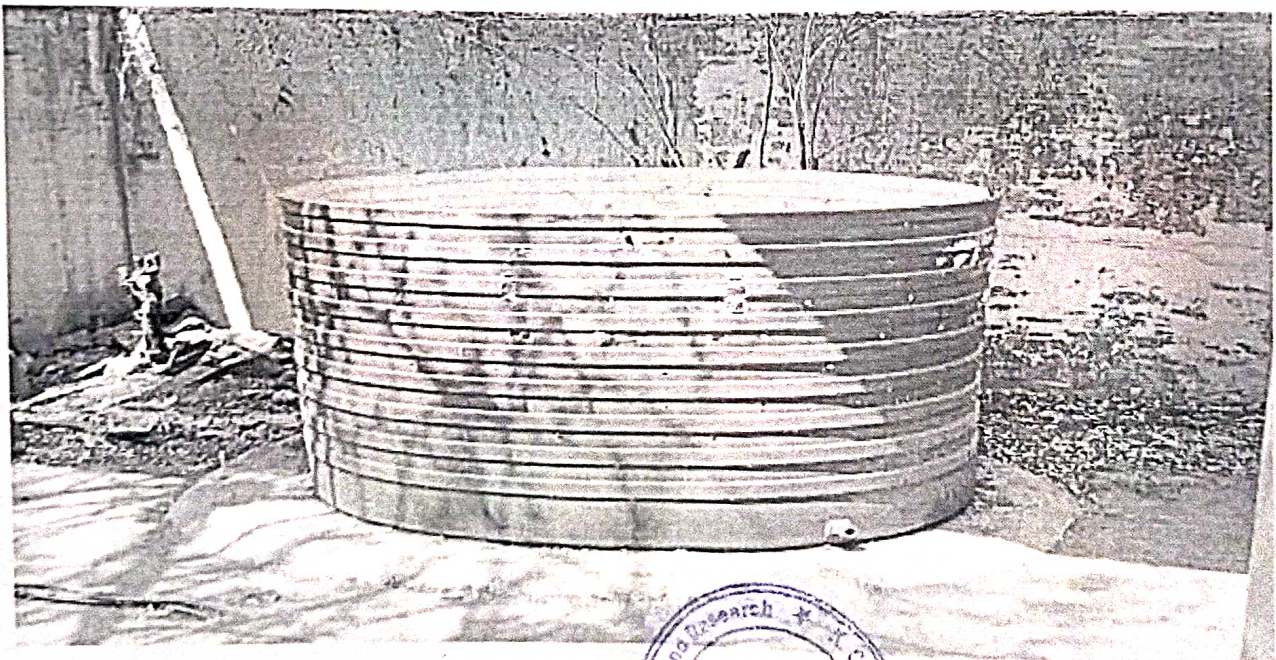
Email: scpl@senergy.co.in

Phone: 022 2555 3297

Dr. Vilas N. Nitnaware
Principal
K.C. Collage of Engineering and Management Studies & Research
Thane (E)



- The college has installed the compost pit, in which canteen waste, garden waste & wet waste are converted in to organic manure. The manure is used for gardening purpose; & the excess available manure, if any, is sold within the staffs & students for personal use.



Helping You to Conserve Energy

Dr. Vilas N. Nitnaware

K.C. Collage of Engineering & Management Studies & Research

VII Infrastructure & Safety



Movement on-campus (Distributed / non-distributed leading to crowds)

- The premises are provided with multiple staircases with necessary entrances to ensure quick and effective movement in normal as well as emergency conditions.
- The movement of vehicle inside the campus is allowed for the students as well as staff to enter the campus with designated parking area.



Helping You to Conserve Energy

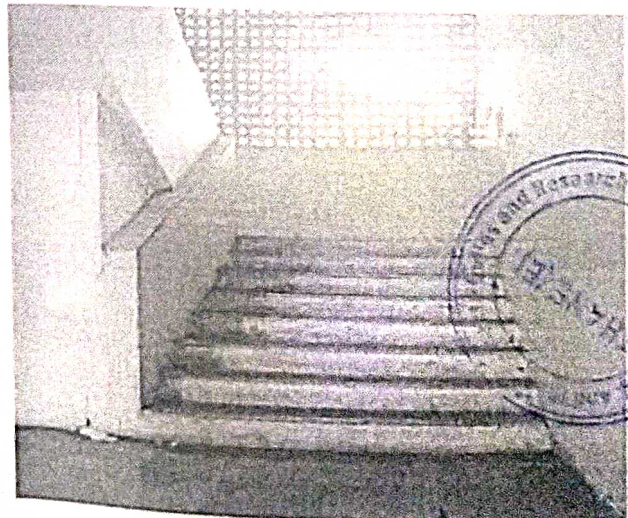
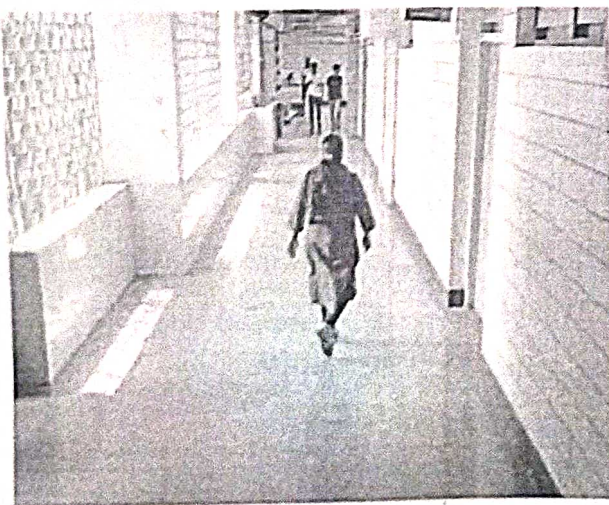
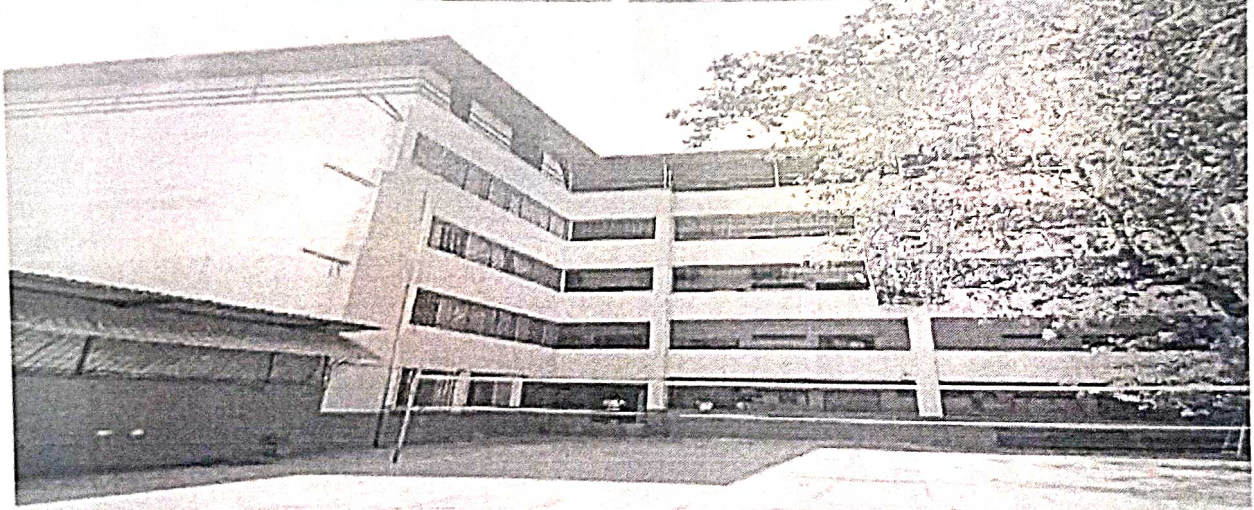
Email: scpl@senergy.co.in

Phone: 022 2555 3297

Page 18 of 26

Dr. Vilas N. Nitaware
Principal
K.C. College of Engineering & Management Studies & Research
K.C. Engineering College

Green, Energy & Environment Audit Report
K.C. Collage of Engineering and Management Studies & Research



Helping You to Conserve Energy

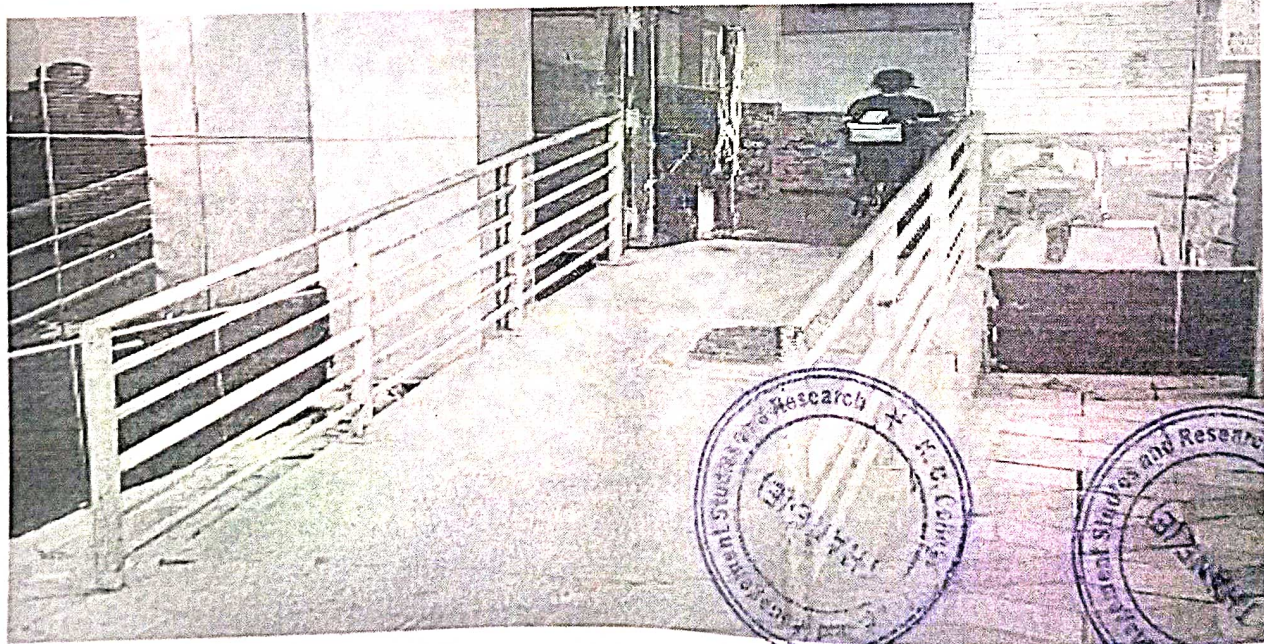
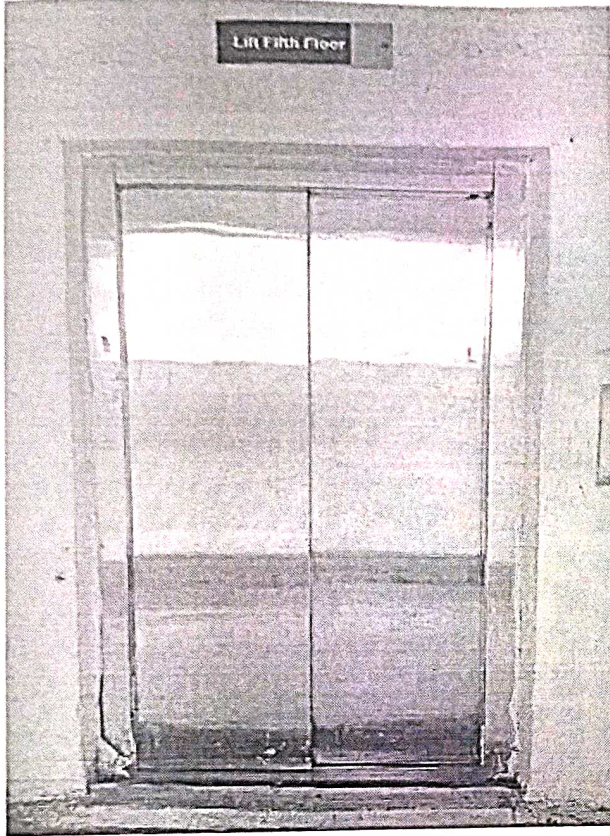
Email: scpl@senergy.co.in

Phone: 022 2555 3297

Dr. Vilas N. Nitnaware
Principal
K.C. Collage of Engg. & Management Studies & Research

Green, Energy & Environment Audit Report
K.C. Collage of Engineering and Management Studles & Research

- The use of plastic has been reduced inside the campus.
- Ramps & Wheelchair are provided on the ground floor to address the needs of differently abled persons.



Helping You to Conserve Energy

Email: scpl@senergy.co.in

Phone: 022 2555 3297

Page 20 of 26

Dr. Vilas N. Nitnaware
Principal
K.C. Collage of Engineering & Management Studies & Research

Green, Energy & Environment Audit Report
K.C. Collage of Engineering and Management Studies & Research

Parking space:




There is adequate parking space for vehicles/four wheelers. However, almost all the students and many of the faculty members avail public transport system which is very convenient due to proximity to railway station and bus services.



Helping You to Conserve Energy

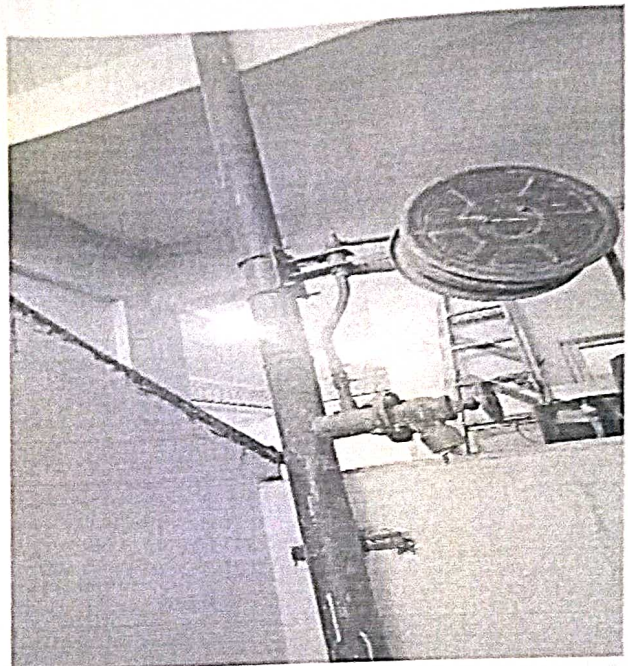
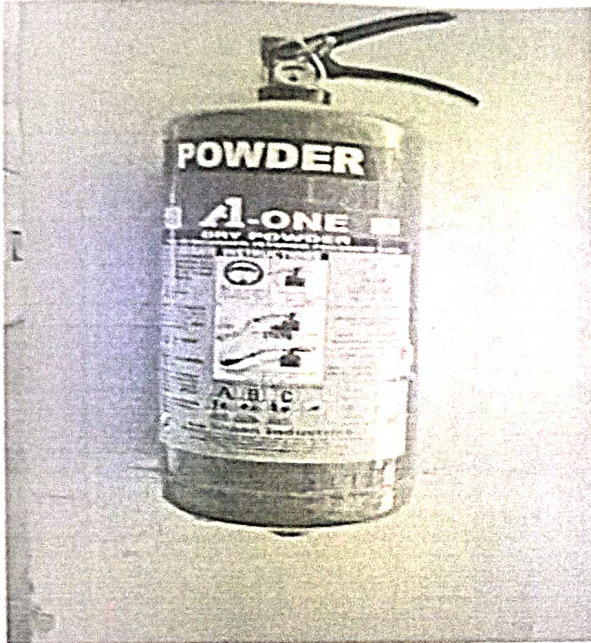
Email: scpl@senergy.co.in

Phone: 022 2555 3297


Dr. Vilas N. Nitaware
Principal
K.C. Collage of Engineering & Management Studies & Research.

Green, Energy & Environment Audit Report
K.C. Collage of Engineering and Management Studies & Research

Firefighting & fire escape system:



There are efficient fire extinguishers in the premises, which are checked / refilled as per the stipulated frequency.

Sr no.	Location	Quantity
1	Ground Floor	15
2	Second Floor	2
3	Third Floor	3
4	Fourth Floor	1
5	Fifth Floor	2
	Total	23

The premise is provided with multiple staircases with requisite entrances to ensure quick and effective movement in emergency conditions.

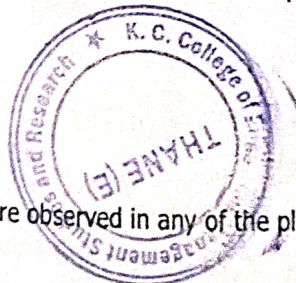
Draining system:

The drains from the washrooms are connected to the municipal drainage, which is a common practice in the colleges in and around Mumbai, Thane & Navi Mumbai.

The municipal corporation charges for water disposal.

Seepage in the building:

The premise was visually inspected for seepages. No seepages were observed in any of the places.



Helping You to Conserve Energy

Green, Energy & Environment Audit Report
K.C. Collage of Engineering and Management Studies & Research

VIII Green Culture



Computers/Laptops:

1. The LED / LCD monitors & Laptops has been procured, which are energy efficient.
2. These monitors are not only energy efficient but also generate minimal heat and cut down on air conditioning load.

Helping You to Conserve Energy

Email: scpl@senergy.co.in

Phone: 022 2555 3297

Dr. Vilas N. Nimbharkar
Principal
K.C. Collage of Engineering &
Management Studies & Research

Green, Energy & Environment Audit Report
K.C. Collage of Engineering and Management Studies & Research

The following steps may be initiated to further enhance efficiency of the systems.

1. An efficient power management system may be incorporated to
 - a. Switch off the display if not in use.
 - b. Put the computer in Sleep mode / switching off the machines, if not used for prolonged period.
2. Optimize brightness of the screen.
3. Discourage use of screen savers, which has similar power consumption.

Computers:

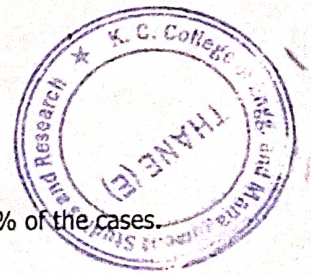
Sr. No.	Lab. Name	Floor	Quantity
1	Internet Lab	Ground	25
2	Operating System Lab - 2	Ground	25
3	System Programming Lab - 3	Ground	45
4	Database Lab - 4	Ground	50
5	Computer Center Lab - X	First	55
6	Language Lab 109	First	20
7	Computer Network Lab - 104 A	First	40
8	Computer Network - 104 B	First	12
9	Fab. Lab - 200	Second	20
10	Lab. 204 A	Second	20
11	IT Project Lab - 204 B	Second	17
12	Machine Learning Lab - 209	Second	20
13	Cloud Computing Lab - 309	Third	20
14	Lab - 305 A	Third	20
15	Lab - 305 B	Third	10
16	Simulation Lab	Fourth	45
17	E Cell	Third	10
18	K C Library	Fourth	10
19	NPTEL Lab	First	10
20	Incubation Lab	Ground	20
Total			494

Paper-less communication:

The major internal as well as external communication is through electronic medium.

Re-using one sided paper for printing:

It was observed that two side printing / printing on the back side of used paper in more than 80% of the cases.

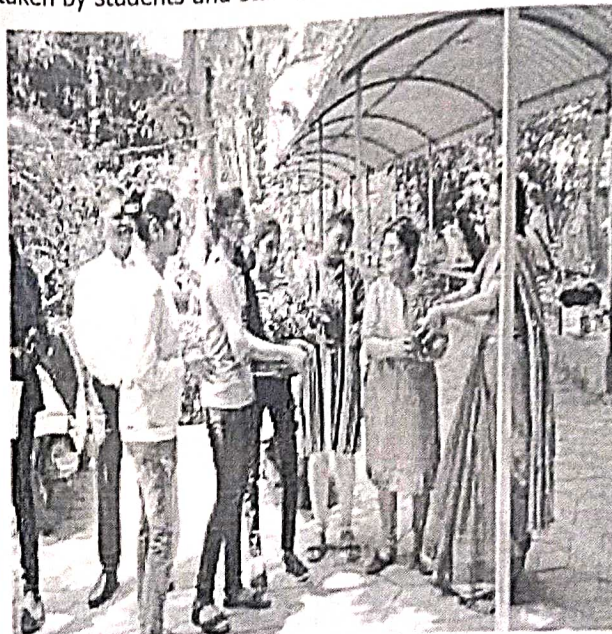


Helping You to Conserve Energy

Green, Energy & Environment Audit Report
K.C. Collage of Engineering and Management Studies & Research

Green Environmental Activities :

Tree plantation drive and Seed plantation trek was undertaken by students and staff members.



Dry waste and E-waste collection drive conduct by students inside the campus.



Helping You to Conserve Energy

Email: scpl@senergy.co.in

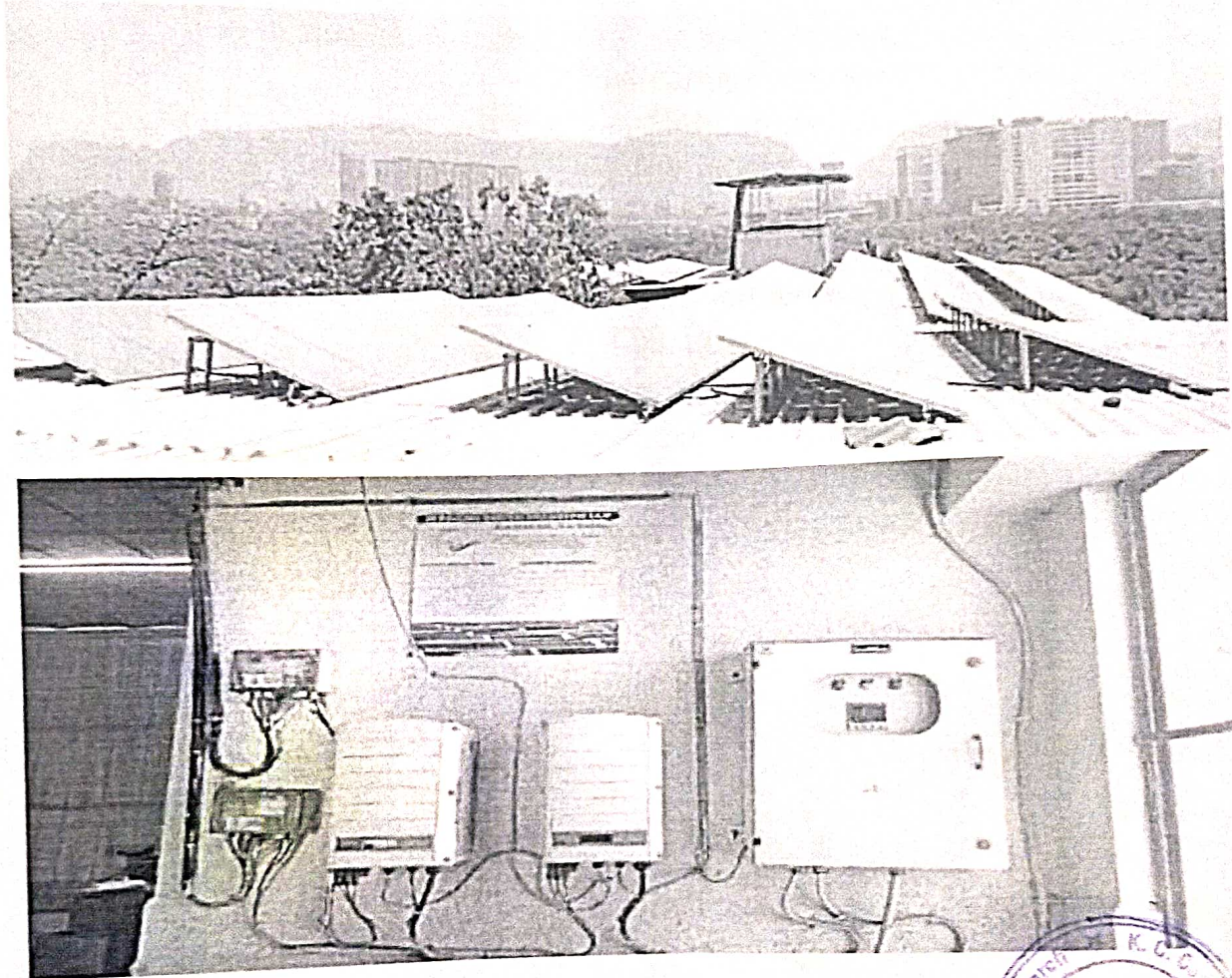
Phone: 022 2555 3297

Dr. Vilas M. Nit... Page 25 of 26
Principal
K.C. Collage of Engineering & Management Studies & Research

IX Renewable Energy

Solar Photovoltaic:

The college has installed roof-top solar photovoltaic system with net metering facility.



Solar Thermal:

There is no application of solar thermal system and does not find attractive in this case.

Biogas Plant:


There is no possibility of installing biogas plant for cooking as the quantity of plate waste is negligible.



Helping You to Conserve Energy

Email: scpl@senergy.co.in

Phone: 022 2555 3297


Page 26 of 26
Dr. Vilas N. Nitnaware
Principal
K.C. Collage of Engineering &
Management Studies & Research

Certificate

This is to certify that Green Audit was carried out at K.C. Collage of Engineering and Management Studies & Research, Mithbunder Road, near Sadguru Gardens, Kopri, Thane (East) – 400 603 during the month of April 2024.

The scope, coverage, findings and recommendations are submitted vide our report SCPL-PR-937-080424 dated April 08, 2024.

For **SENERGY CONSULTANTS PVT LTD**



Tushar Kamble
(Project coordinator)



Dr. Vilas N. Nitnaware
Principal
K.C. Collage of Engineering & Management Studies and Research
Page 1 of 3

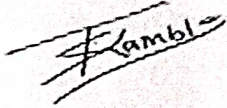
Helping You to Conserve Energy

Certificate

This is to certify that Environment Audit was carried out at K.C. Collage of Engineering and Management Studies & Research, Mithbunder Road, near Sadguru Gardens, Kopri, Thane (East) – 400 603 during the month of April 2024.

The scope, coverage, findings and recommendations are submitted vide our report SCPL-PR-937-080424 dated April 08, 2024.

For **SENERGY CONSULTANTS PVT LTD**



Tushar Kamble
(Project coordinator)



Dr. Vilas N. Nitaware

K.C. Collage of Engineering & Management Studies & Research. Page 3 of 3

Helping You to Conserve Energy

Green, Energy & Environment Audit Report
K.C. Collage of Engineering and Management Studies & Research

IV Environmental System

Ventilation & Air Quality:

- The air ventilation is adequate.
- Several indoor & outdoor plants have been installed to improve air quality.



Helping You to Conserve Energy

**Green, Energy & Environment Audit Report
K.C. Collage of Engineering and Management Studies & Research**



- Natural light is been used for maximum illumination during daytime.
- It has been a general practice to switch off the fans & lights in an occupied area.



Helping You to Conserve Energy

Green, Energy & Environment Audit Report
K.C. Collage of Engineering and Management Studies & Research

Indoor & Outdoor Plants :

Sr No	Name of Plants
1	Arabian jasmine - Jasminum sambac
2	Almond - Terminalia Catappa
3	Hibiscus - Hibiscus rose-sinesis
4	river tamarind - Leucaena leucocephala
5	Monoon longifolium - Polyalthia longifolia
6	Ti - Cordyline fruticosa
7	Rubber fig - Ficus elastica
8	Bamboo - bambusa
9	Papaya - Carica papaya
10	Sago palm - Cycas revoluta
11	Banana - musa
12	Camphor - Ficus benjamina
13	Nile tupil - markhamia
14	Lemon - Citrus limon Burm
15	Pomegranate - Punica granatum
16	Oak - Casuarina equisetifolia
17	Oyster - tradescantia
18	Snake plant - dracaena Tri Fascista
19	Coconut - Cocos nucifera
20	Areca palm - dypsis lutescens
21	Banyan - Ficus benghalensis
	Total Number of Plants = 241

Helping You to Conserve Energy

Green, Energy & Environment Audit Report
K.C. Collage of Engineering and Management Studies & Research

V Water Management

Water Source:

The water supplied by the municipal corporation is used for drinking & other requirements. The incoming water from the municipal corporation is metered.



The water consumption is generally within the norms.

Water Coolers & Purifiers:

The water purifiers and coolers are provided on convenient locations, the details are as under.

Sr no.	Location	Total
1	First Floor	1
2	Second Floor	1
3	Fifth Floor	1

Helping You to Conserve Energy

**Green, Energy & Environment Audit Report
K.C. Collage of Engineering and Management Studies & Research**



Water Distribution System:

The distribution network and piping are more or less satisfactory and adequate.

Rainwater Harvesting:

The rainwater from the terrace area of the college building is being drained into municipal storm water system through requisite ducts and pipes.

However, considering proximity to the seashore, rainwater harvesting may not be practical.

Helping You to Conserve Energy

VI Waste Generation & Management

Sewage & Wastewater:

The sewage is fed into the municipal drainage. This is a common practice and the municipal corporation which charges towards the sewage charges.

Solid Waste:

- The organic as well as inorganic waste is segregated in the college premises.
- The dustbins for Recyclable waste and Non-Recyclable Waste have been provided at appropriate locations.
- The organic waste is used to generate manure by composting.
- The electronic gadgets with residual life may be donated while the electronic waste is properly segregated and handed over to appropriate scrap collector.



Helping You to Conserve Energy

Green, Energy & Environment Audit Report
K.C. Collage of Engineering and Management Studies & Research



- The college has installed the compost pit, in which canteen waste, garden waste & wet waste are converted in to organic manure. The manure is used for gardening purpose; & the excess available manure, if any, is sold within the staffs & students for personal use.



Helping You to Conserve Energy

Green, Energy & Environment Audit Report
K.C. Collage of Engineering and Management Studies & Research

VII Infrastructure & Safety



Movement on-campus (Distributed / non-distributed leading to crowds)

- The premises are provided with multiple staircases with necessary entrances to ensure quick and effective movement in normal as well as emergency conditions.
- The movement of vehicle inside the campus is allowed for the students as well as staff to enter the campus with designated parking area.



Helping You to Conserve Energy

**Green, Energy & Environment Audit Report
K.C. Collage of Engineering and Management Studies & Research**



Helping You to Conserve Energy

**Green, Energy & Environment Audit Report
K.C. Collage of Engineering and Management Studies & Research**

- The use of plastic has been reduced inside the campus.
- Ramps & Wheelchair are provided on the ground floor to address the needs of differently abled persons.



Helping You to Conserve Energy

**Green, Energy & Environment Audit Report
K.C. Collage of Engineering and Management Studies & Research**

Parking space:



There is adequate parking space for vehicles/four wheelers. However, almost all the students and many of the faculty members avail public transport system which is very convenient due to proximity to railway station and bus services.

Helping You to Conserve Energy

**Green, Energy & Environment Audit Report
K.C. Collage of Engineering and Management Studies & Research**

Firefighting & fire escape system:



There are efficient fire extinguishers in the premises, which are checked / refilled as per the stipulated frequency.

Sr no.	Location	Quantity
1	Ground Floor	15
2	Second Floor	2
3	Third Floor	3
4	Fourth Floor	1
5	Fifth Floor	2
	Total	23

The premise is provided with multiple staircases with requisite entrances to ensure quick and effective movement in emergency conditions.

Draining system:

The drains from the washrooms are connected to the municipal drainage, which is a common practice in the colleges in and around Mumbai, Thane & Navi Mumbai.

The municipal corporation charges for water disposal.

Seepage in the building:

The premise was visually inspected for seepages. No seepages were observed in any of the places.

Helping You to Conserve Energy

Green, Energy & Environment Audit Report
K.C. Collage of Engineering and Management Studies & Research

VIII Green Culture



Computers/Laptops:

1. The LED / LCD monitors & Laptops has been procured, which are energy efficient.
2. These monitors are not only energy efficient but also generate minimal heat and cut down on air conditioning load.

Helping You to Conserve Energy

Green, Energy & Environment Audit Report
K.C. Collage of Engineering and Management Studies & Research

The following steps may be initiated to further enhance efficiency of the systems.

1. An efficient power management system may be incorporated to
 - a. Switch off the display if not in use.
 - b. Put the computer in Sleep mode / switching off the machines, if not used for prolonged period.
2. Optimize brightness of the screen.
3. Discourage use of screen savers, which has similar power consumption.

Computers:

Sr. No.	Lab. Name	Floor	Quantity
1	Internet Lab	Ground	25
2	Operating System Lab - 2	Ground	25
3	System Programming Lab - 3	Ground	45
4	Database Lab - 4	Ground	50
5	Computer Center Lab - X	First	55
6	Language Lab 109	First	20
7	Computer Network Lab - 104 A	First	40
8	Computer Network - 104 B	First	12
9	Fab. Lab - 200	Second	20
10	Lab. 204 A	Second	20
11	IT Project Lab - 204 B	Second	17
12	Machine Learning Lab - 209	Second	20
13	Cloud Computing Lab - 309	Third	20
14	Lab - 305 A	Third	20
15	Lab - 305 B	Third	10
16	Simulation Lab	Fourth	45
17	E Cell	Third	10
18	K C Library	Fourth	10
19	NPTEL Lab	First	10
20	Incubation Lab	Ground	20
Total			494

Paper-less communication:

The major internal as well as external communication is through electronic medium.

Re-using one sided paper for printing:

It was observed that two side printing / printing on the back side of used paper in more than 80% of the cases.

Helping You to Conserve Energy

**Green, Energy & Environment Audit Report
K.C. Collage of Engineering and Management Studies & Research**

Green Environmental Activities :

Tree plantation drive and Seed plantation trek was undertaken by students and staff members.



Dry waste and E-waste collection drive conduct by students inside the campus.



Helping You to Conserve Energy

Green, Energy & Environment Audit Report
K.C. Collage of Engineering and Management Studies & Research

IX Renewable Energy

Solar Photovoltaic:

The college has installed roof-top solar photovoltaic system with net metering facility.



Solar Thermal:

There is no application of solar thermal system and does not find attractive in this case.

Biogas Plant:

There is no possibility of installing biogas plant for cooking as the quantity of plate waste is negligible.

Helping You to Conserve Energy



Excelsior Education Society's
K.C. College of Engineering and Management Studies and Research
(Affiliated to the University of Mumbai)
Mith Bunder Road, Near Hume Pipe, Kopri, Thane (E)-400603

REPORT ON TREE PLANTATION

Date: 08/08/2018

Venue: Pimpri village, Dahisar, Mumbra


Time: 10:00am-4:00pm

On the occasion of Women's day K.C.College Of Engineering & Management studies & Research, students and staff visited Pimpri village which is adopted by the college. Tree Plantation program was held at Pimpri village along with many other program organized by the college for village people. About 51 students and 18 staffs attended the event. The program started by walkathon in which students and staff participated actively to walk through the village to spread the awareness of tree plantation and green environment. School students from the village were also part of the walkathon. After which we went to plant the trees at the village's pond (Talao). Before planting the trees, the area was cleaned by students as part of SWACH BHARAT ABHIYAN. Tree plantation was inaugurated by ECO club Incharge Prof.Sandesh Sir by planting Neem tree followed by which all staffs and students planted trees like Lemon, Ashoka, Alovera, Tulsi, Bougainvillea, Almond along with villagers. We even distributed some plants to villagers for planting them in their house vicinity.

Cordinated by

Eco Club



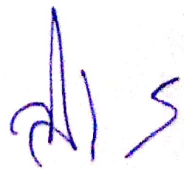

Dr. Vilas N. Nitnaware
Principal
K.C. College of Engineering &
Management Studies & Research





PHOTOTS OF TREE PLANTATION AT PIMPRI

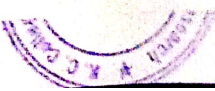



Dr. Vilas N. Nitraware



[Handwritten signature]

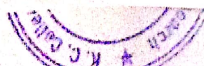
Dr. Vilas M. Nilnaware
Principal
K.C. College of Engineering &
Management Studies & Research



K.C. College of Engineering and
Management Studies & Research



Dr. Vilas N. Nitnaware
Principal
K.C. College of Engineering &
Management Studies & Research



Management Studies & Research





K.C. College of Engineering and Management Studies and Research
 (Affiliated to the University of Mumbai)
 Mith Bunder Road, Near Hume Pipe, Kopri, Thane (E)-400603

Excelsior Education Society's
 Proposal for Activity (Version 1.2)

Academic Year: 2021-22

I. Basic Details:

Name of the Activity: Workshop on basics of Electrical wiring and safety			
Proposed Day & Date of Conduction	Name of Faculties Coordinator	Department	Coordinator 's email & Phone no.
28/08/2021	Yogesh Karunakar	EXTC	9594276600 yogesh.karunakar@kccemsr.edu.in
Time (Duration in hours)	Venue	Activity for class/group Student/Neighborhood (Target number)	Nature: Academic/co- curricular / extracurricular/ Environmental/ social/ other
Full day	Grampanchayat Pimpri, Kalyan	Gurudiksha School, Zila Parishad School	Social

II. Brief Information about the Activity (Criterion no -)::

Topic/ Subject of the activity	Workshop on basics of Electrical wiring and safety
	Choose any one from the following Topic from syllabus <input type="checkbox"/> Content beyond syllabus <input checked="" type="checkbox"/> Bridge Course <input type="checkbox"/>
	Choose any one from the following Value added course <input type="checkbox"/> N.A Add-on on course <input type="checkbox"/>
	Was the above topic conducted in previous 2 A.Y.? If Yes, Name of the internal faculty who attended the same training in previous 2 A. Y. _____ N.A _____
Objective for conducting the activity	To create awareness of electrical safety and basic wiring at home amongst students and teachers of the school
Name of External Speaker / Guest	N.A.
Has guest visited in last two year in your department?	N.A. If yes When _____ What was the topic of delivery? _____
Is guest an	N.A.



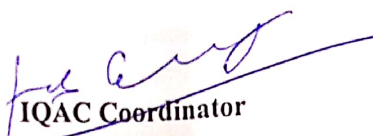
Dr. Vilas N. Nilnaware
 Principal
 K.C. College of Engineering & Management Studies & Research

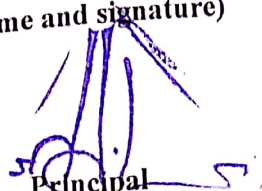
alumni	If Yes, alumni faculty coordinator sign
Methodology	
Program Outcome	N.A.
Course Outcome	N.A.
Any other workshop or guest lecture or training planned for the same audience in this semester (If yes, please specify)	N.A.
Budget Required	(if yes, please specify the amount and use Annexure I for justification as attachment) Rs. 1300

HoD Sign


Approval Status: Yes/No (To be ticked by competent authority with name and signature)


Coordinator Signature


IQAC Coordinator


Principal




Dr. Vilas N. Nitnaware
Principal
K.C. College of Engineering &
Management Studies & Research

Annexure I - Application for grant of financial assistance for organizing Activity

Date: 28/08/2021

1. Title of Activity: Workshop on basics of Electrical wiring and safety
2. Name, designation, department, Email and address of Event Coordinator: Yogesh Karunakar, Assistant Prof. EXTC, Head EDC, yogesh.karunakar@kecemsr.edu.in
3. (i) Expected Budget: Rs. 1500
 (ii) Contribution from participants: Nil
 (iii) Grant requested from Institute: Rs. 1300
4. Geographical Coverage: State Level
5. Development of Teaching Learning Material (if applicable): N.A
6. Detailed Programme i.e. name and resume of speakers and their topics/titles of lectures etc. (Attach separate sheet if required)
7. Provide expenditure details under various heads (else mention NA) :

Item	Proposed Amount	Sanctioned Amount	Name and Signature of Competent Authority for sanction
Video recording	N.A.		
Food			
Local Transport	700		
TA , DA for resource persons	N.A.		
Honorarium for resource persons	N.A.		
Name to be mentioned on cheque for honorarium	N.A.		
Accommodation	N.A.		
Development of Teaching-Learning material	500		
Registration kits	N.A.		
Certificates, flex, advertisement	N.A.		
Stationary	N.A.		
Consumables	N.A.		
Miscellaneous	100		
Total	1300		



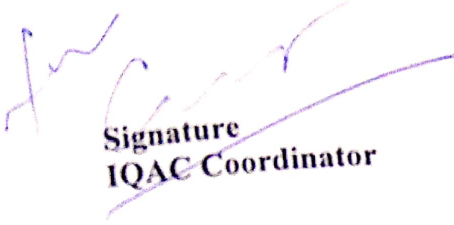
(Signature)
Dr. Vilas N. Nitnaware
 Principal
 K.C. College of Engineering &
 Management Studies & Research




Signature
Event Coordinator



Signature
Head of Department / Committee Coordinator



Signature
IQAC Coordinator

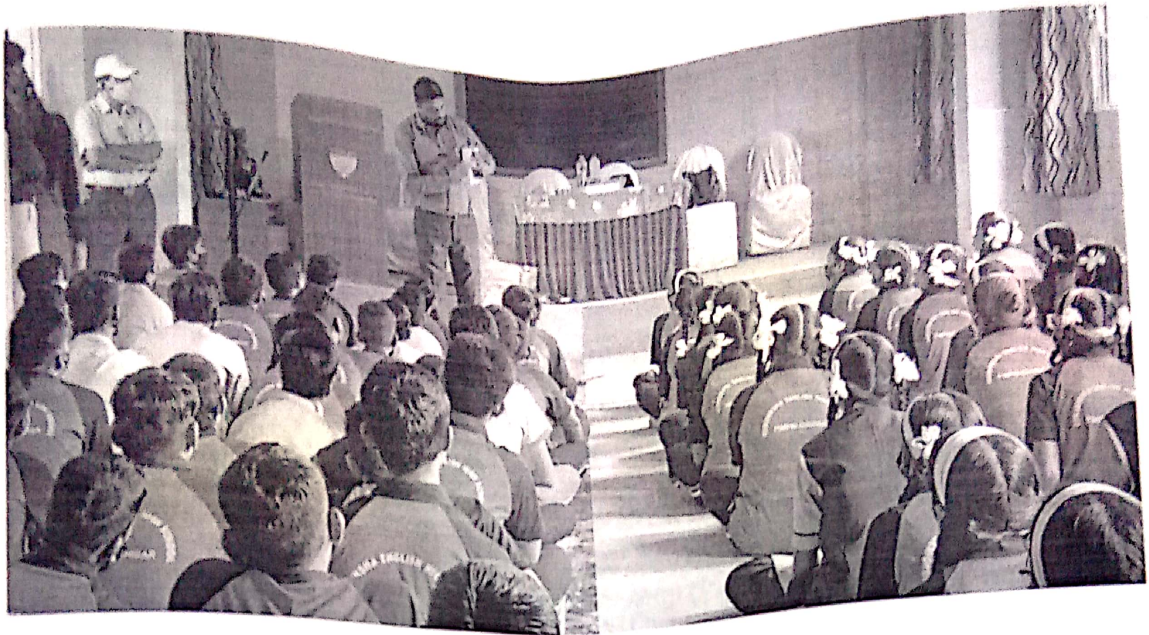


Signature
Principal

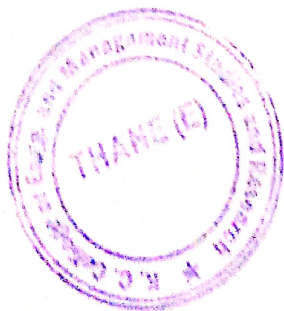
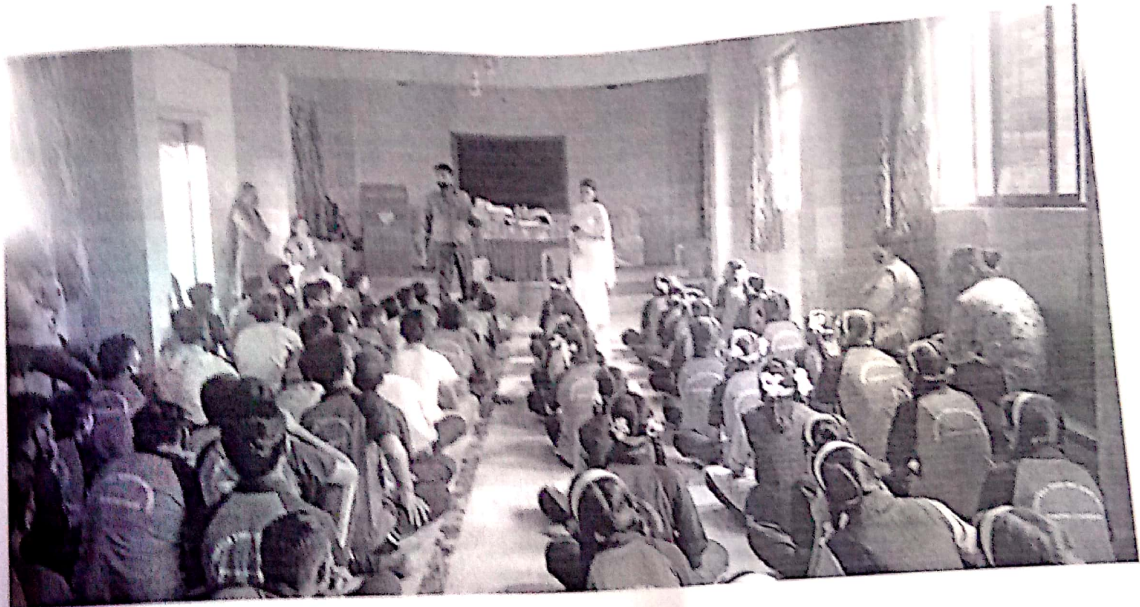
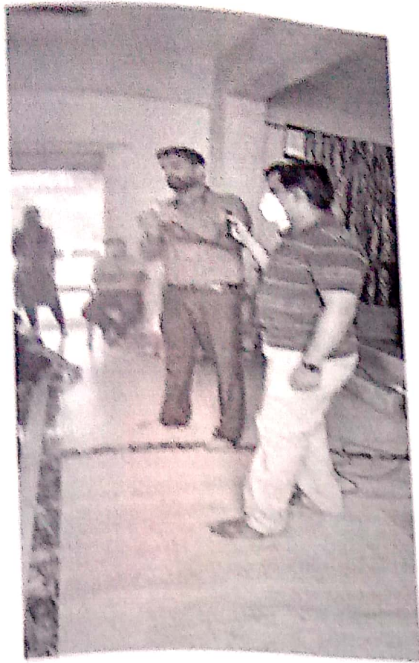



Dr. Vilas N. Nitnaware
Principal
K.C. College of Engineering &
Management Studies & Research





Dr. Vilas N. Nitnaware
Principal




Dr. Vilas N. Nitnaware
Principal
K.C. College of Engineering &
Management Studies & Research



Excelssior Education Society's
K. C. College of Engineering and Management Studies and Research
(Affiliated to the University of Mumbai)
MithBunder Road, Near Hume Pipe, Kopri, Thane (E)-400603

Activity Report (Version 1.2)

Academic Year: 20XX-XX

I. Basic Details

Name of The Activity: Day long trip at rural Thane			
Day & Date of Conduction	Name of Faculties	Department/ Committee	Coordinator Name & Phone no.
Sat 1th march 2022	Pratap Nair	Computer Engg/NSS	Pratap.nair@kccemsr.edu.in 9821402862
Time	Venue	Activity for class / group Student/ Neighbourhood (number of participants)	Nature: Academic/co-curricular / extracurricular/ Environmental/ social/ other
6:20 AM to 7:00 PM	Chondhe Village Asangaon Thane	30	co- curricular

II. Brief Information about the Activity (Criterion no -): 7

Details of the activity	A Day long trip was arranged at rural Thane. A group of 30 students across all the branches had joined the trip. They visited solar roof top at the school, Chondhe village and observed various challenges faced in daily life.
Budget Received (if any)	No

III. Proofs attached: communication letters/notice/Details of Guest/authenticated signed list of participants/ certificate format (if any)/ document/payment vouchers/one page report/photos/feedback analysis/ any other
(Tick on the applicable)

1. Proposal <input checked="" type="checkbox"/>	2. Annexure-I <input type="checkbox"/>	
3. One page summarized report <input checked="" type="checkbox"/>	4. Attendance <input type="checkbox"/>	5. Photographs <input checked="" type="checkbox"/>
6. Feedback response sheet <input checked="" type="checkbox"/>	7. Feedback Analysis <input type="checkbox"/>	8. Brochure or flyers <input type="checkbox"/>
9. Certificate <input type="checkbox"/>	10. Notice or Online msg proof <input checked="" type="checkbox"/>	11. Cheque <input type="checkbox"/>

Coordinator Signature

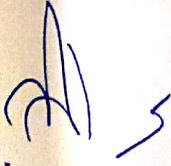
IQAC Coordinator

Principal



Dr. Vilas N. Nitnaware
Principal
K.C. College of Engineering &
Management Studies & Research




Dr. Vilas N. Nitnaware
Principal
K.C. College of Engineering &
Management Studies & Research



K.C. College of Engineering and Management Studies and Research

Excelisior Education Society's

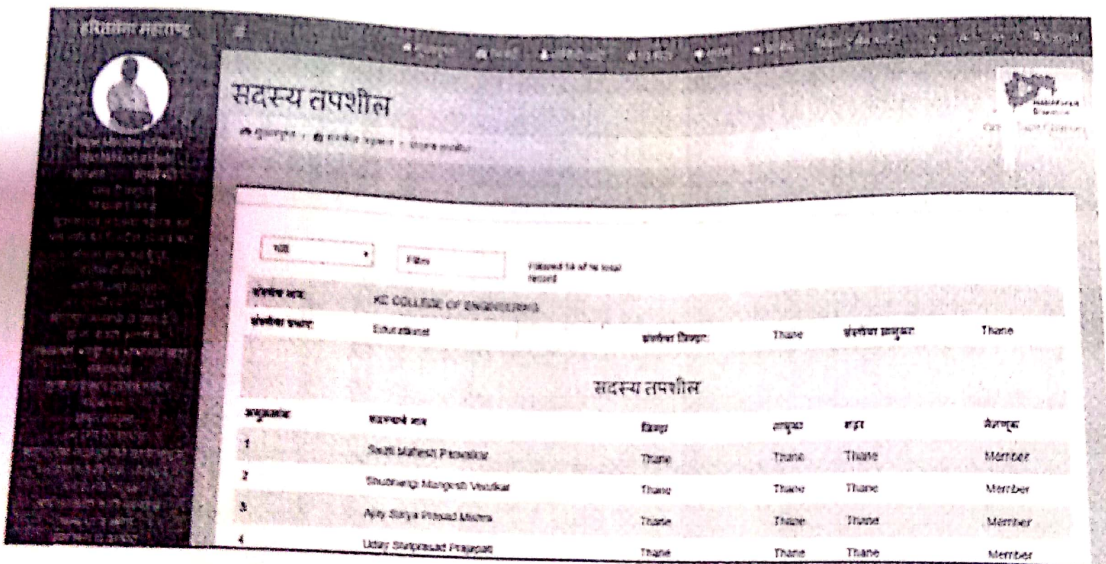
(Affiliated to the University of Mumbai)

MithBunder Road, Near Hume Pipe, Kopri, Thane (E)-400603

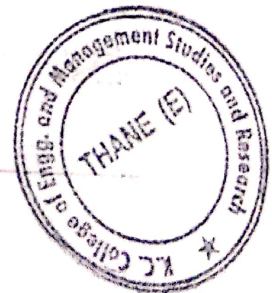
Green Army Tree Plantation Report

As per DTE circular no. २/विकांमु /तांशी /आस्था (४)/वृक्षलागवड२०१८/1328 dated 18 April 2018 regarding 13 crore tree plantation program planning, challenges and execution. The institute has taken solids steps. The team is constituted and registered on green army portal on Mahaforest.gov.in. In that unit the Principal Dr. HansrajGuhilot is the chief division 1 zonal officer, Dr. Shelley Oberoi is the Liaising officer and Mr. Deepak Khabale is Sub liaising officer. Also we initiated enrollment on staff, students and family members on the green army portal.

Initially we identified plots for tree plantation in the vicinity of the college area and barren land at Pimpri village, Mumbra. The pits for tree plantation were dug at several locations. As per the circular guidelines, the photos of pits were sent to nodal officer Mrs. Sanjana Male on Whats app. Some of the photos of pits are attached herewith. On 5th June and 1st July 2018 we planted 100 saplings of different variety. The photos of event were sent on whats app to nodal officer Mrs. Sanjana Male. Also all the photos were sent to zonal officer Prof. K. P. Narkhade and Mr. Thakur on Green Army Thane whats app group on 14 July.



Screenshot of Green army portal on mahaforest.gov.in



Dr. Vilas N. Nitnaware

Principal

K.C. College of Engineering & Management Studies and Research






Excelssior Education Society's
K. C. College of Engineering and Management Studies and Research
(Affiliated to the University of Mumbai)
Mith Bunder Road, Near Hume Pipe, Kopri, Thane (E)-400603

We witness urban development and bail from a recently developed city thane, we realize that from the urban pallatte the green color is slowly vanishing. KCCEMSR took an initiative to become ecofriendly. The first step was to raise awareness about environmental issues and inspire students and neighborhood to adapt healthy lifestyles and safe practices to keep our city and in turn our planet healthy. The activities were taken as initiatives by the college and we are very proud to share our escalating deeds in Eco club.

Sr. No.	Initiatives taken	Date
1	Audit to check usage of public and private transport	21/06/2018
2	Bags distribution activity	20/06/2018
3	E-waste collection drive	
4	Tree Plantation on 5 th June (World Environment day)	05/06/2018
5	Installation of solar panel	09/03/2018
6	Tree plantation at Pimpri	08/03/2018
7	Seminar on Domestic waste management and terrace gardening	16/03/2018
8	Waste paper collection drive	01/03/2018
9	Compost Pit Inauguration	28/12/2017
10	Green and Clean Drive	18/11/2017
11	Tree plantation by Guest	
11.1	Dr. Shripad Taklikar, Dr. Kulwant Singh, Dr. Shamlan M. S. Reshmwala	30/06/2018
11.2	Prof. J. J. Shrikhande	28/02/2018
11.3	Prof. A. S. Khanna	14/02/2018
11.4	Dr. Allhad Kuwadekar	13/01/2018
11.5	Dr. Dubewar	18/11/2017




Dr. Vilas N. Nitnaware
Principal
K.C. College of Engineering &
Management Studies & Research



- Compose
- Inbox 45
- Starred
- Spam
- Sent
- Drafts 3
- More
- Prof. Neta +

Search mail

Fwd: Fwd: Green Campus Award Competition Inbox 4

KC IQAC
to me, deepak.khobale

----- Forwarded message -----
From: Rashmi Joshi <rashmijoshi72@gmail.com>
Date: Thu Jan 10 2019 at 10:15 PM
Subject: Re: Fwd: Green Campus Award Competition
To: KC IQAC <iqac@kccollege.edu.kc>
Cc: <director.iqac@kccollege.edu.kc>

Many thanks for sending the details on time.

No recent mails
Start a new one

Best Regards
Rashmi Joshi
Environment Coordinator



Dr. Vilas N. Nalnaware
Principal
K.C. College of Engineering &
Management Studies & Research

02/1/2019

Fwd: Fwd: Green Camp

Award Competition - neta shree@kccemsr.edu.in K.C. College

Engineering And Management Studies And Research Mail

Gmail

Search mail

Compose

Inbox 40

Starred

Snoozed

Sent

Drafts 3

More

Prof. Neha +

From "K.C. IQAC" <iqac@kccemsr.edu.in>
Sent Thu, 10 Jan 2019 18:16:49 +0530

To: raahnrishu72@rediffmail.com, director.id@kccemsr.edu.in

Subject: Fwd: Green Campus Award Competition
Dear Madam,

Please find the green initiatives report and proof of K. C. College of Engineering and Management Studies and Res
competition

>
Regards
Dr. A. Chakrabarti
IQAC Coordinator

No recent chats
Start a new one




mail.google.com/mail/u/0/#inbox?ui=two-pane

CCSFTJwK

1/1




Dr. Vilas N. Nilnaware
Principal
K.C. College of Engineering &
Management Studies & Research

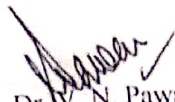


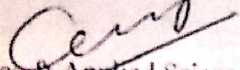
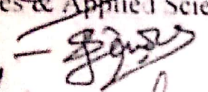

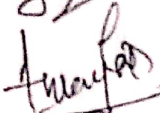
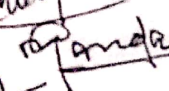
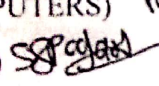
Date: 28/01/2019

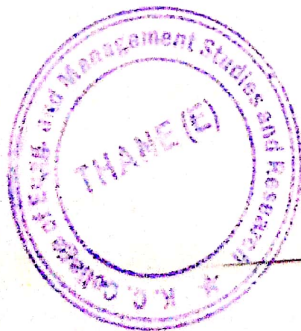
Notice


All the Students, Teaching and Non-teaching staff is informed that "Cleanliness Awareness Program" by Thane Municipal Corporation is going to be held on Tuesday, 29 January 2019 at 04.00 p. m.

Attested:
Dr. Arundhati C.
IQAC Head


Dr. V. N. Pawar
Principal

CC To:-
(H.O.D Humanities & Applied Science) 
(H.O.D EXTC) 
(H.O.D ETRX) 
(H.O.D I.T) 
(H.O.D COMPUTERS) 
(H.O.D MMS) 




Dr. Vilas N. Nitnaware
Principal
K.C. College of Engineering &
Management Studies & Research



Excelssior Education Society's
K. C. College of Engineering and Management Studies and Research
(Affiliated to the University of Mumbai)
Mith Bunder Road, Near Hume Pipe, Kopri, Thane (E)-400603

A.Y. 2018-19

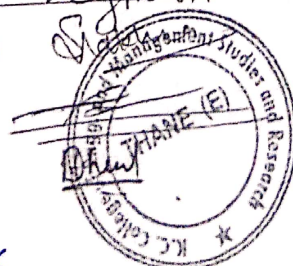
Date: 29/01/2019

Cleanliness Awareness Swachh Bharat Abhiyan
Program

Attendance Sheet

Sr. No.	Name	Sign
1.	Neha Dalvi	Neha Dalvi
2.	Aastha Pawvedi	Aastha Pawvedi
3.	Nandini Gupta	Nandini Gupta
4.	Mansi Gupta	Mansi Gupta
5.	Rutuja Jadhav	Rutuja Jadhav
6.	Karish Bane	Karish Bane
7.	Viraj V Dalvi	Viraj V Dalvi
8.	Shravan Ambhule	Shravan Ambhule
9.	Gaurang Bhatnagar	Gaurang Bhatnagar
10.	Sahil Ambre	Sahil Ambre
11.	Tanmay Chaudhar.	Tanmay Chaudhar.
12.	Rutu Barve	Rutu Barve
13.	Ketki Chavan	Ketki Chavan
14.	Jagamath Barik	Jagamath Barik
15.	Aparva Chaudhari	Aparva Chaudhari
16.	Ishmeet Kaur Arora	Ishmeet Kaur Arora
17.	Ritik Agrawal	Ritik Agrawal
18.	Priyanshu Gupta	Priyanshu Gupta
19.	Shivam Bhasin	Shivam Bhasin
20.	Kevin Chotaliya	Kevin Chotaliya
21.	Kritika Chaudhary	Kritika Chaudhary
22.	A Dina Sathesan	A Dina Sathesan
23.	Vignesh N. Tyer	Vignesh N. Tyer

- 24) Sanjana Nalkhwa (D) (Rno.07)
25) Aditya Sharma
26) Dnyanesh Dhumal



Dr. Vilas N. Nimbawale
Principal
K.C. College of Engineering &
Management Studies & Research



Excellsiior Education Society's
K. C. College of Engineering and Management Studies and Research
(Affiliated to the University of Mumbai)
Mith Bunder Road, Near Hume Pipe, Kopri, Thane (E)-400603

Roll No.	Name	Sign
39	Shraddha S. Seewant	But
40	Griya Vasna	Griya
30	Bhanjali Surendra Pawar	Bhanjali
38	Shraddha Tiwari	Shraddha
21	Anushka . Lad	Anushka
27	Krutika pagade	Krutika
29	Shalini . Bhat	Shalini
26	Tejas . D. Nisad	Tejas
08	Abhishek B. Ingale	Abhishek
36	Kunwar S. Singh	Kunwar
44	Vinay . V. Yellaram	Vinay
06	Siddhi Ghosalkar	Siddhi
37	Saurabh sonawane	Saurabh
23	Mohammad . Saif	Mohammad
01	Anand . Sureshkumar Arumugam	Anand
16	Rupesh Suresh Katkar	Rupesh
17	Khan Faiyaz	Khan
28	Pandya Raj Ramesh	Raj
20	Kotian Raj	Raj
21	Aditya Kini	Aditya
22	Chauhan Surajbhan	Suraj
23	Sankar . Gupta	Sankar
31	Venugopal Poojary	V.G. Poojary
32	Vijayesh . G. Raitkar	Vijayesh
35	Anush . S. Shetty	Anush

24

Nadar Nitishelakumrae



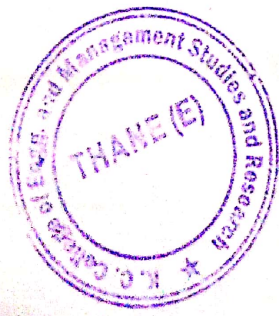
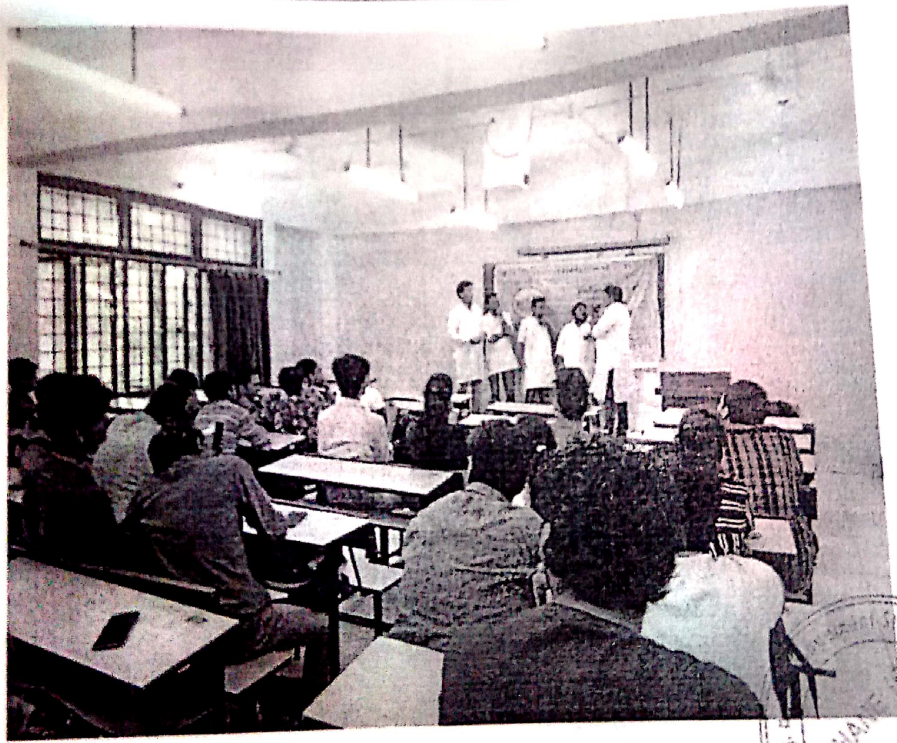
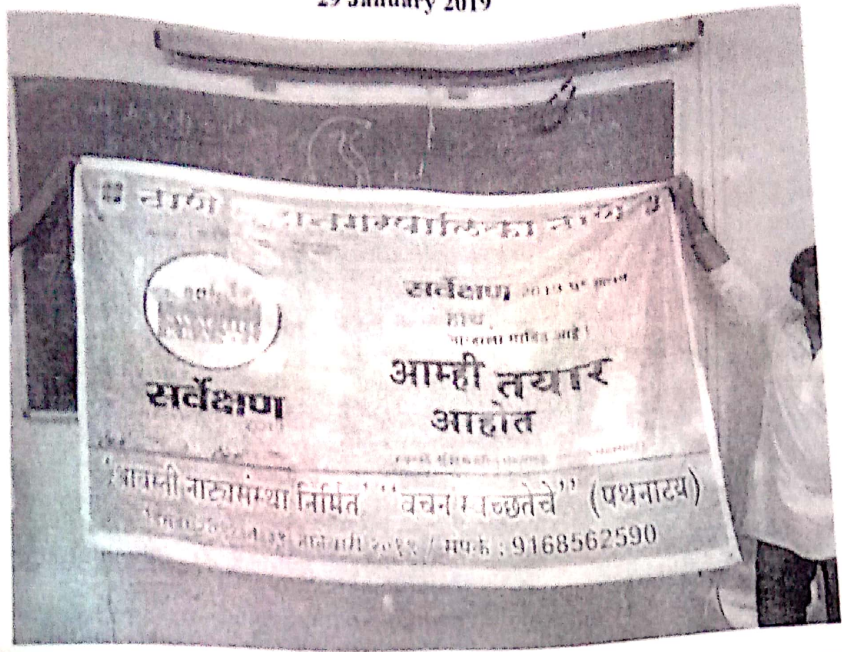
Dr. Vilas N. Nitnaware
Principal

K.C. College of Engineering &
Management Studies & Research



K. C. College of Engineering and Management Studies and Research
 (Affiliated to the University of Mumbai)
 MithBunder Road, Near Hume Pipe, Kopri, Thane (E)-400603


Clearing Awareness Program
 29 January 2019



(Signature)
Dr. Vilas N. Nitnaware
 Principal
 K.C. College of Engineering &
 Management Studies & Research

Green Audit Report.




Dr. Vilas N. Nitnaware
Principal
K.C. College of Engineering &
Management Studies & Research



Mith Bunder Road, Near Sadguru Garden, Kopri, Thane (E) 400603.

12/04/19

Green Audit was conducted by
Quality Certification Services.

Saket 101, Shivaji Park, Dadar (W), Mumbai - 400028.

Green Audit was conducted by

CA. Dr. Ashis .Arun. Palkhiwale.

(ACA, GDCA, Mcom, Msc (Env Sc), MA (Eco), PhD (Env),
Automobile Engg, DISA, DFM, DAM, DPT, DCL & DJL)

Lead Auditor & Trainer for


ISO 9001, 14001, 45001, 20000, 22000, 27001, 50001, 14064, 14046 &
OHSAS 18001, SA 8000, BS 25999 & CG, CSR, SOX, CDM.

Mobile :- +91 9029800664.

Green Audit was conducted on

3rd & 4th January 2019.




Dr. Vilas N. Nilnaware
Principal
K.C. College of Engineering &
Management Studies & Research



Mith Bunder Road, Near Sadguru Garden, Kopri, Thane (E) 400603.

**Excelsior Education Society's
KC College of Engineering & Management Studies & Research.
Green Audit Report January 2019**

Profile of KCCEMSR

A brief about the Institute

Established in 2001, Excelsior Education Society's KC College of Engineering & Management Studies & Research at Thane is Punjabi Linguistic Minority Institute. It is an educational and charitable trust which has been contributing in the mission of transforming rural India into a developed nation by providing quality education in engineering as well as management. The institute is approved by AICTE & DTE and is affiliated to the University of Mumbai which is the only institute in Thane region. It provides following courses: Electronics and Telecommunication Engineering, Computer Engineering, Information Technology, MMS(MBA).

With the spotlight on the outcome-based education (OBE) and experiential learning helps students to gain an excellent theoretical knowledge base and enhances to develop thinking skills, industry-ready technical skills, communication skills, entrepreneurial skills, and analytical frameworks. In their pre-final semester students are exposed to Industry oriented projects & internship.

The college also provides ample of scope in co-curricular and extracurricular activities wherein, the students are encouraged to show their talents. The College ensures that the students prove themselves to be not only well qualified engineers but also very responsible and ideal citizens of our country.

The college has different cells to help students become self sufficient and independent Entrepreneurial Development Cell (E-Cell) provides an apt platform for budding entrepreneurs Gate Study Cell sensitizes students about Graduate Aptitude Test, and Training & Placement cell is vigorously working to prepare them for aptitude test and harness opportunities in and beyond the industry. Gender Equity Cell is to sensitized about the issues of women through camps and workshop. Eco Club : "Excel the greener way", Youth Red Cross, Rotract: we rise by uplifting others, Training & Placement cell etc. These clubs enhance our students and inculcate value based education making them better human beings.

Sansad Adarsh Gram Yojana (SAGY) with a motto "Developed Village-Developed Nation", is a rural development program broadly focusing upon the development in the villages which includes social development, cultural development and spread motivation among the people on social mobilization of the village community. The program was launched by the Prime Minister of India, Narendra Modi on the birth anniversary of Jayaprakash Narayan, on 11 October 2014. The distinct feature of this Yojana is that it is (a) demand driven (b) inspired by society (c) based on people's participation. SAGY, has inspired us in taking up a benevolent task and challenging the skills of our students which can be put to use for a noble cause.

KCCEMSR has bagged the award of 'Best Engineering College with academic Excellence' by Worldwide Achievers Pvt. Ltd in an exclusive event, by the Asian Education Summit & Awards. The award recognizes the professional contribution and academic achievement of the organization in the area of education. Midday Excellence award in Engineering and Management Education, Thane Beyond. Our college was awarded BEST Engineering college with academic excellence in Mumbai in Asia Education Summit 2016, The award recognizes the professional contributions and academic achievement of an organization in area of education. Our College was awarded with "Great Achievers Award for education excellence" for outstanding achievements in chosen field of activity held at Bangkok, Thailand. Both the awards were conferred upon our Managing Director Dr Sai Kiran Khanna.

A dream doesn't become reality through magic; it takes sweat, determination & hard work. Human spirit & creativity is endowed with infinite potential & power, hence, we aim at producing not only good professionals but also worthy citizens.

Mith Bunder Road, Near Sadguru Garden, Kopri, Thane (E) 400603.



Dr. Vilas N. Ninarware
Principal
K.C. College of Engineering &
Management Studies & Research



Inclusions & Exclusions while performing the Green Audit.

- 1) Carbon emissions due to Students Travelling is not considered.
- 2) Carbon emissions due to Faculty Travelling is considered.
- 3) Carbon emissions during Industrial Visits travelling not considered.
- 4) Carbon emissions from the Construction of Building are not considered as the Building is more than 10 Years old.
- 5) All Wood is more than 6 years old so not considered. (Classroom Faculty Platforms).
- 6) Plywood is not considered as Plywood is already recycled.
- 7) Total Consumption of Electricity for the Institute is considered.
- 8) Total Consumption of Water for the Institute is considered.
- 9) LPG Cylinders are consumed in Canteen only. No consumption in Chemistry Lab.
- 10) Record presented by Eco Club members is considered to be Authentic.
- 11) Green Cover not only considered in Institute campus but also in the adopted village for NSS.
- 12) Emissions from Tiles, Paints & Printers are not considered.
- 13) Ambient Air Quality Monitoring is performed only at 3 Locations. (Which is seriously inadequate considering the area of the Campus / Building of the Institute).
- 14) Analysis of Water entering the drains is not performed. (Sewage water, Lab washing water, Washing & Cleaning water, Canteen water) is let out in drains. The Drains are connected to the creek.
- 15) Raw Water Analysis is not performed.
- 16) Radiation due to Wifi & Mobile Phones is not considered.



Mith Bunder Road, Near Sadguru Garden, Kopri, Thane (E) 400603.



[Handwritten signature]



Excelsior Education Society's
KC College of Engineering & Management Studies & Research.
Green Audit Report January 2019

Air.

Ambient Air Quality was monitored at 3 Locations.

Sr No.	Sample No.	Location
01	L1	Ground Floor Near Temple.
02	L2	Ground Floor Near Security Cabin.
03	L3	5 th Floor near Open Terrace.

(Performing Air Quality Monitoring at only 3 Locations is seriously inadequate considering the area of the Campus / Building of the Institute).

The Ambient Air Quality Monitoring was performed by Open Bottle method.
The Bottle kept at location open for 24 Hours.
The Ambient Air Quality Monitoring was performed by Waste Encare (India) Pvt. Ltd.

The results are as under.

Test Parameters	Unit	Specification Limits as per CPCB	Sample 1 L- 1	Sample 2 L - 2	Sample 3 L - 3
Sulphur Dioxide (So ₂)	mg/m ³	80	07	09	10
Nitrogen Dioxide (No ₂)	mg/m ³	80	06	11	09
Particulate Matter (PM 10)	mg/m ³	100	23	36	32
Particulate Matter (PM 2.5)	mg/m ³	60	31	44	38
Carbon Monoxide (CO)	mg/m ³	02	0.005	0.004	0.002

(All Values are found within the CPCB limits)

Separate signed report is also given to the Institute.

Diesel Generator is not used Frequently.
Stack Emissions from the Diesel Generator stack is not performed.



Mith Bunder Road, Near Sadguru Garden, Kopri, Thane (E) 400603.



Dr. Vilas N. Nimbaware
Principal
K.C. College of Engineering &
Management Studies & Research

Water.

Total Consumption of water is considered from the Meter reading shown in the Water Bill.

Water used for

Drinking.
Cleaning.
Washing & Flushing.
Gardening.
In Laboratory.
In Canteen.

Total Water Consumption from
01/04/2018 to 30/09/2018 is
10,97,000 Liters.

So the Water Foot print is

10,97,000 / 183 Days = 5995.

So the Water Foot Print is 5995 Liters of Water Per Day.

A separate Water Foot Print Certificate is given to the Institute.

Currently no measures are being taken to save water or to recycle water.

Paper.

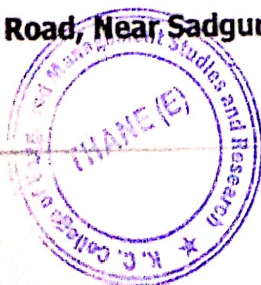
Each A 4 paper is used from both the sides.

After use on both the sides then it is sold to Old Paper Merchant.

To the extent possible use of soft copies of documents is promoted.



Mith Bunder Road, Near Sadguru Garden, Kopri, Thane (E) 400603.



Dr. Vilas N. Nitaware
Principal
K.C. College of Engineering &
Management Studies & Research

Electricity.

Total Consumption of Electricity is considered from the Meter reading shown in the Electricity Bill.

Electricity used for

Tube Lights, Lights & Fans.
Air conditioners.
Computers & Printers.
To run the Utilities.

The details of the Electricity Units consumed from June to October 2018 are as below

Sr No.	Month	Units Consumed
01	June	4,387
02	July	14,966
03	August	8,926
04	September	6,194
05	October	8,743
TOTAL		43,216
Monthly Average		8,643

Power Generation by running the 63 KVA Diesel Generator.

Monthly Average Consumption of Diesel is not more than **15 Liters** of Diesel.

Measures taken for Energy / Electricity Conservation.

- 1) Replacing the conventional Florescent Tube Lights with LED Tube Lights. (nearly 70% are replaced).
- 2) Replacing the CFL Blubs with LED Bulbs. (nearly 80% are replaced).
- 3) Solar Power Generation. Solar Power Generation of 80 KW.
- 4) Periodic Maintenance of the Diesel Generator to get Optimum performance.

LPG Consumption

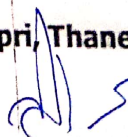
Liquefied Petroleum Gas.

In the Canteen depending on the semester schedule on an average 10 LPG Cylinders Per month are required.

There is no other application of LPG Cylinders in the Institute.

Mith Bunder Road, Near Sadguru Garden, Kopri, Thane (E) 400603.




Dr. Vilas N. Nitaware
Principal
K.C. College of Engineering &
Management Studies & Research



Consumption of Petrol & Diesel by Staff travelling to & fro the Institute.

According to the data given by the Eco Club following are the Travelling details.

Distance Travelled by staff To & Fro the Institute by 2 Wheeler	Petrol Consumption per day by 2 Wheeler	Distance Travelled by staff To & Fro the Institute by 4 Wheeler	Petrol Consumption per day by 4 Wheeler	Distance Travelled by staff To & Fro the Institute by 4 Wheeler	Diesel Consumption per day by 4 Wheeler
160 Km	4 Liters	60 Km	4 Liters	20 Km	2 Liters
	Average of 40 Kmpl		Average of 15 Kmpl		Average of 10 Kmpl
So Monthly Fuel Consumption considering 25 Working Days in a Month.					50 Liters
	100 Liters		100 Liters		

So Following is the Calculation of the Carbon Foot Print.

Calculation of Kg of CO2 emissions

1	2	3	4	5
Category	As per ISO 14064 Kg of CO2 per unit of consumption	Average Monthly Consumption	Calculation 2*3	Total Kg of CO2 2*3=5
Electricity	4.3 Kg Per Unit	8,643 Units	8,643 X 4.3 =	37,165
Diesel	2.68 per liter	35 Liters	35 X 2.68 =	94
Petrol	2.31 per liter	200 Liters	200 X 2.31 =	462
LPG	1.51 per Kg	190 Kg	190 X 1.51 =	287
TOTAL				38,008

So the Average Monthly CO2 Emissions are 38,008 Kg of CO2.

A separate Carbon Foot Print Certificate is given to the Institute.

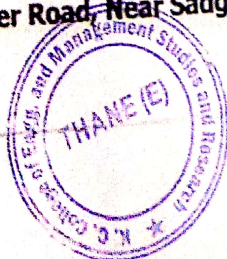
Note :-

The Consumption of Average Electrical Units is calculated based on units consumed from June to October 2018.

The CO2 emissions from the manufacturing of the Cement used in Plastering & Tiles & Granites is not considered as it does not fall in the period of June to October 2018.

It will be considered next year while performing the Green Audit.

Mith Bunder Road, Near Sadguru Garden, Kopri, Thane (E) 400603.



Dr. Vilas N. Nitnaware
 Principal
 K.C. College of Engineering &
 Management Studies & Research



**Environment / Green Audit related activities
carried out by the Institute & Eco Club**

- 1) 400 Kgs of E Waste disposed via Eco Rox on 05/07/2018.
- 2) Beach Clean Drive on 20.07.2018.
- 3) Demonstration on Home Composting Bucket & Terrace Gardening on 07.03.2018.
- 4) Printer Toner Refilling. Total 185 Refilling in 2017-18.
- 5) Herbal Pest Control.
- 6) Composting facility for processing Canteen waste.
- 7) Tree Plantation in the Village nominated for NSS Activity.
- 8) Replacing Conventional Florescent Tube Light by LED Tube Light.
- 9) Installation of Solar Power of 80 Kw.
- 10) Used Batteries are given in Buy Back.
- 11) Use of waste Plywood for Interior Decoration.
- 12) Preparation of Paper & Cloth Bags & promoting its use in neighborhood.
- 13) Eco Army Initiative.

**Proposed Environment / Green Audit related activities
to be carried out by the Institute & Eco Club**

- 1) Fitting of Ceiling Fans with less Power Consumption.
- 2) Installing Central Air conditioner to reduce power consumption.
- 3) Water from the roof of those structures where corrugated metal sheets are there & letting it on the open spaces where the soil is loosened so that it leads to re charging of water into the Ground level water table.
- 4) Increasing the size of the Compost pit.
- 5) 100% conversion to LED Lighting.



Mith Bunder Road, Near Sadguru Garden, Kopri, Thane (E) 400603.



Dr. Vilas N. Nitnaware
Principal
K.C. College of Engineering &
Management Studies & Research



Green Cover Details.

Green cover area in the campus is 70% of the Open space. It is 1,161 Sq mts.

Following are the trees planted in the campus.

JAMUN
BANANA
JACKFRUIT
Neem
Bael
Jamun
Chiku
Gulmohar
Ashoka
Banyan
Peepal
Mango
Jackfruit
Coconut.
Various Vegetables.
Various Flowering Plants.

The Village in which NSS activities are carried out by the Institute a tree plantation drive was undertaken twice.
Out of the 100 trees planted 25 are surviving & out of 25 trees planted 8 are surviving.

Hazardous Waste Disposal

E waste is disposed through authorized Disposer. (Eco Rox).

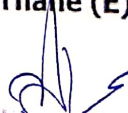
Used Batteries are given in Buy Back to the Supplier of New Batteries.

Laboratory Waste & Used Chemicals are diluted & let out in Drain.



Mith Bunder Road, Near Sadguru Garden, Kopri, Thane (E) 400603.




Dr. Vilas N. Nandaware
Principal
K.C. College of Engineering &
Management Studies & Research

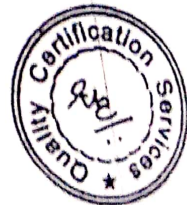
Suggestions for Environment / Green Audit related activities to be carried out by the Institute & Eco Club

- 1) STP (Sewage Treatment Plant) can be installed for processing & reusing the Sewage waste water.
- 2) The Flushing Tanks of WC (Toilets) to be modified such that only half gets filled & thus while flushing only half of the water is used.
- 3) Drip irrigation can be implemented for the garden & vegetables & Flower plants.
- 4) To fit the atomizer devise to taps to save water.
- 5) Testing of the water in the drain as it is directly going into the creek.
- 6) Motion sensors can be fitted for the Light fittings in Washrooms, Lift and Lobby where continuous usage is not there.
- 7) Survival rate of planted trees should improve.
- 8) Grafting of new plants in the trunk of dead trees can be done.
- 9) In the next Green Audit to test the Ambient Air Quality at least at 20 Locations.
- 10) To test the Diesel Generator Stack Emissions.
- 11) To verify the radiation from Wifi & Mobile phones.
- 12) To conduct Poster & other Innovative Environment Idea Competition among students.

The Above Report is prepared based on the Records & facts shown by the Office bearers of Institute & the members of Eco Club & also based on the observations made by the Auditor on 3rd & 4th January 2019.

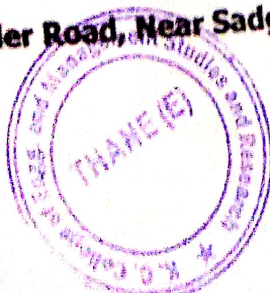
@Jeh

CA. Dr. Ashis Arun. Palkhiwale.
(ACA, GDCA, Mcom, Muz (Env Sc), MA (Eco), PhD (Env), Automobile Engrg, DISA, DFM, DAM, DPT, DCL & D.J.L.)
Lead Auditor & Trainer for
ISO 9001, 14001, 45001, 20000, 22000, 27001, 50001, 14064, 14046 & OHSAS 18001, SA 8000,
BS 25999 & CG, CSR, SOX, CDM.



12/01/2019

Mith Bunder Road, Near Sadguru Garden, Kopri, Thane (E) 400603.



Dr. Vilas N. Ninaware
Principal
K.C. College of Engineering &
Management Studies & Research

GSTIN : 27AAHHP1572M1ZQ

Original Copy

TAX INVOICE
SAINATH ENTERPRISES

Shop No. 1, Ground Floor, Jeevan Prakash CHS. Opp. Union Bank, Louiswadi
Thane (W) - 400 604

Tel : 9867706377 / 9082195088 email : info@sainath.com@yahoo.co.in

All Type of LED & Electrical Product Supplier

Party Details :
KC COLLEGE OF ENGINEERING & MANAGEMENT
THANE WEST

Invoice No. : 962
Dated : 02-04-2019
Place of Supply : Maharashtra (27)
Reverse Charge : N

GSTIN / UIN :

S.N.	Description of Goods	HSN/SAC Code	Qty.	Unit	Price	Amount(₹)
1.	CORVI NEW TUBE 20W 5000K	9405	610.00	Pcs.	250.00	1,52,500.00
2.	CORVI 2*2 PANEL 36W 5000K	9405	28.00	Pcs.	2,026.79	56,750.12
						2,09,250.12
Add : CGST @ 6.00 %						12,555.01
Add : SGST @ 6.00 %						12,555.01
Less : Rounded Off (-)						0.14
Grand Total					638.00 Pcs.	₹ 2,34,360.00

Handwritten signature and date: 02/04/2019

Tax Rate	Taxable Amt.	CGST Amt.	SGST Amt.	Total Tax
12%	2,09,250.12	12,555.01	12,555.01	25,110.02

Rupees Two Lakh Thirty Four Thousand Three Hundred Sixty Only

Bank Details : BANK NAME : UNION BANK OF INDIA, BRANCH : LOUISWADI, THANE
IFSC CODE : UBIN0562963, ACCOUNT NO. : 629601010050441

Terms & Conditions
E.&O.E.
1. Goods once sold will not be taken back.
2. Interest @ 24% p.a. will be charged if the payment is not made within the stipulated time.
3. Subject to Maharashtra Jurisdiction only.

Receiver's Signature :

For SAINATH ENTERPRISES
[Signature]
Authorized Signatory



[Signature]
Dr. Vilas N. Ninaware
Principal
K.C. College of Eng. & Mgt. Studies & Research

Executive Education Society's
K. C. College of Engineering, Thane (E)

Security Main Gate

Roll No. RC 124 Time 12:00 PM

Date 02/04/19

[Signature] Store Keeper Adm. Manage.



[Signature]
Dr. Vilas N. Nilhare
Principal
K.C. College of Engineering &
Management Studies & Research

DELIVERY CHALLAN

FROM: **SAINATH ENTERPRISE**
 Shop No. 1, Ground Floor,
 Jeevan Prakash Co-op. Hsg. Soc.
 Opp. Union Bank, Lohavadi,
 Thane (W) - 400 604.

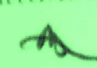
TO: **K.C. College of Engg
 Management Studies
 & Research**
 Khopur (Thane) West

ORDER NO: **2** DATE: **27/3/19**
 CHALLAN NO: **2** Mr. Vilas N. Niinaware


PLEASE RECEIVE THE FOLLOWING GOODS IN GOOD ORDER & CONDITION.

Quantity	PARTICULARS	Rate	Amount ₹.
28	Curtai 2x2 Panel 5000(1)	2026.79	56750.1
	(27-11)		
	22 new set sample forms		56750
	(2405)		63405
			63405
			<u>63560</u>

This receipt form should be signed by the person having authority and return it to bearer. No complaints will be entertained if the same are received after 24 hours after delivery.

Sentured Received by





Dr. Vilas N. Niinaware
 Principal
 K.C. College of Engineering &
 Management Studies & Research

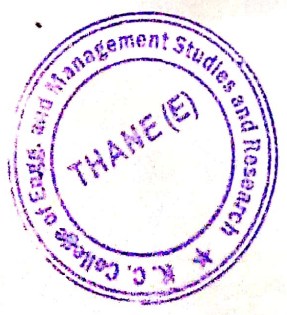
PORT ON TREE

K.C. COLLEGE OF ENGINEERING & RESEARCH
 K.C. Education Society's
 K.C. College of Engineering, Thane (E)
 Security Main Gate

Id Card No. KE 704 Time 1.45 PM
 Date 27/3/19

Security Store - Keeper Admn. Manager

02F12
 7018 3
 7018 0
7325



(Signature)
 Dr. Vilas N. Minaware
 Principal
 K.C. College of Engineering &
 Management Studies & Research



K.C. Education Society's
Regd. Under Public Trust Act, 1950 Regd. No. P-638

K.C. COLLEGE OF ENGINEERING & MANAGEMENT STUDIES & RESEARCH

(Affiliated To University of Mumbai, Approved by AICTE & DTE)
(DTE Code J210)

Ref. No.

Date: 9/05/18

PURCHASE ORDER

SOLAR ENERGIE TECHNOLOGIES

H.O. - RM 13, salunke chawl,
near municipal school,
temphipada road,
bandup(west)400078

Dear Sir,

We refer to your quotation and wish to release our Purchase Order for supply of following items on the terms and conditions as mentioned below.

Sr. No.	PARTICULARS	Unit Rate (Rs.)	QTY	Total Amount (Rs.)
1	High mast light - 200 watt LED High flood light (6 numbers) @ Rs.7000- each) = Rs.42000.00 12 mtr Pole (1 Number) @ Rs.24000-; Rs.24000.00 Installation of pole (one number) = Rs.12000.00 @ Rs.12000-; Rs.78000.00	78000.00		78,000.00
2	Highmast light - 150 watt LED High flood light (6 numbers) @ Rs.6000- each), = Rs.36000.00 12 mtr Pole (1 Number) @ Rs.24000-; Rs.24000.00 Installation of pole (one number) Rs.12000.00 @ Rs.12000-; Rs.72,000.00	72,000.00		72,000.00
3	Transportation	LS		Additional ac actual
	GST @ 12% ON LED LIGHTS (Rs.42000/- + Rs.36000-)			9360.00
	GST @ 18% on Pole (Rs.48,000-)			8640.00
	Total			Rs.1,68,000.00



Dr. Vilas N. Ninaware
Principal

K.C. College of Engineering & Management Studies & Research

Mith Bunder Road, Near Sadguru Garden, Kopri, Thane (E) - 400 603.

Tel. : 2532 7100 Fax : 2532 6496 • E-mail.: kcce21@hotmail.com



K. C. COLLEGE OF ENGINEERING & MANAGEMENT STUDIES & RESEARCH

(Affiliated To University of Mumbai, Approved by AICTE & DTE)
(DTE Code 3210)

Ref. No.

Date :

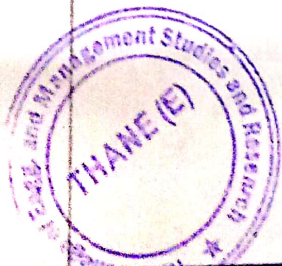
Terms and conditions

- 1) 60 % Advance Payment and Balance 35% after completion of work and 5 % retained for 5 Months
- 2) Payment will be made by cheque only
- 3) 3 year warranty period of entire High mast light, 12 mtr Pole.

Yours faithfully,

KC.College of engineering Management and research

(Mr. Sai Kiran Khanna)
Managing Director.



Dr. Vilas N. Nilnaware
Principal
K.C. College of Engineering &
Management Studies & Research

Mith Bunder Road, Near Sadguru Garden, Kopri, Thane (E) - 400 603.

Tel : 2532 7100 Fax : 2532 6496 • E-mail.: kcce21@hotmail.com

SOLAR ENERGBIE TECHNOLOGIES

H.O.- RM.13, salunke chawl, near municipal school, temphipada road, bhandup (west) 400078
 Email- solarenergy123@rediffmail.com , GST NO. - 27ALMPB4767A1Z9
 Contact Nos. 7039033681, 9146252275, 7039033680

Date: 07/05/2018

Ref: MAHA-PI/070518/2018/1

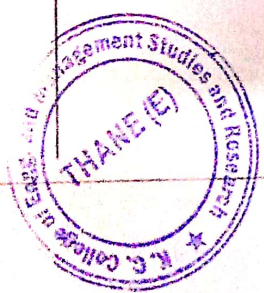
Proforma Invoice

TO K C College Thane		PI no.-5/2018/2985/070518. Quotation No.: 2985 Date: 07/05/2018		
KIND ATTN: Rohit sir		Order No - oral disc.		Date: 07/05/2018
E-MAIL: Mobile :		T.R. No. Date : nil		
Sr No.	PARTICULARS	Unit Rate (Rs.)	QTY	Total Amount (Rs.)
1	Highmast light One - 200 watt LED High flood light (6 numbers) (@ Rs.7000/- each), 12 mtr Pole (1 Number) (@ Rs.24000/-), Installation of pole (one number) (@ Rs.12000/-)	78000.00	01	78,000.00
2	Highmast light Two - 150 watt LED High flood light (6 numbers) (@ Rs.6000/- each), 12 mtr Pole (1 Number) (@ Rs.24000/-), Installation of pole (one number) (@ Rs.12000/-)	72,000.00	01	72,000.00
3	Transportation	LS	LS	Additional ac actual
	GST @ 12% ON LED LIGHTS (Rs.42000/- → Rs.36000/-)			9360.00
	GST @ 18% on Pole (Rs.48,000/-)			8640.00
	Total			1,68,000.00
	Amounts In Words: One Lac Sixty Eight Thousand only			
Payment terms and conditions - 60% advance , balance 40% after completion of work within 15 days Work Completion time - 20 days after receipt of advance. Warrantee - 3 years GST NO - 27ALMPB4767A1Z9				

*delivered no. 204
at 07/09/17*

For Solar Energbie Technologies

Authorized Signatory



[Handwritten Signature]

Dr. Vilas N. Nihaware

Principal

K.C. College of Engineering & Management Studies & Research

SOLAR ENERGBIE TECHNOLOGIES

H.O.- RM.13, salunke chawl, near municipal school, temphipada road, bhandup(west) 400078
 Email- solarenergy123@rediffmail.com
 Contact Nos. 7039033681, 9146252275, 7039033680

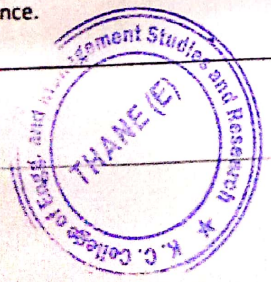
Date: 07/05/2018

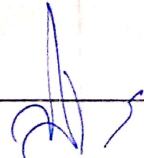
Ref MAHA/070518/2018/1

Quotation for LED High Bay Light

TO: K C College Thane		Quotation No.: 2985 Date: 07/05/2018		
KIND ATTN: Rohit sir		Order No. - oral disc. Date: 07/05/2018		
E-MAIL: Mobile:		T.R. No. Date: nil		
Sr No	PARTICULARS	Unit Rate (Rs.)	QTY	Total Amount (Rs.)
1	Highmast light One - 200 watt LED High flood light (6 numbers) (@ Rs.7000/- each), 12 mtr Pole (1 Number) (@ Rs.24000/-), Installation of pole (one number) (@ Rs.12000/-)	78000.00	01	78,000.00
2	Highmast light Two - 150 watt LED High flood light (6 numbers) (@ Rs.6000/- each), 12 mtr Pole (1 Number) (@ Rs.24000/-), Installation of pole (one number) (@ Rs.12000/-)	72,000.00	01	72,000.00
3	Transportation	LS	LS	Additional ac actual
	GST @ 12% ON LED LIGHTS (Rs.42000/- + Rs.36000/-)			9360.00
	GST @ 18% on Pole (Rs.48,000/-)			8640.00
	Total			1,68,000.00
Amounts In Words: One Lac Sixty Eight Thousand only				

Payment terms and conditions -
 60% advance , balance 40% after completion of work within 15 days
 Work Completion time -
 20 days after receipt of advance.
 Warrantee - 3 years




Dr. Vilas N. Nilnaware
 Principal
 K.C. College of Engineering &
 Management Studies & Research